

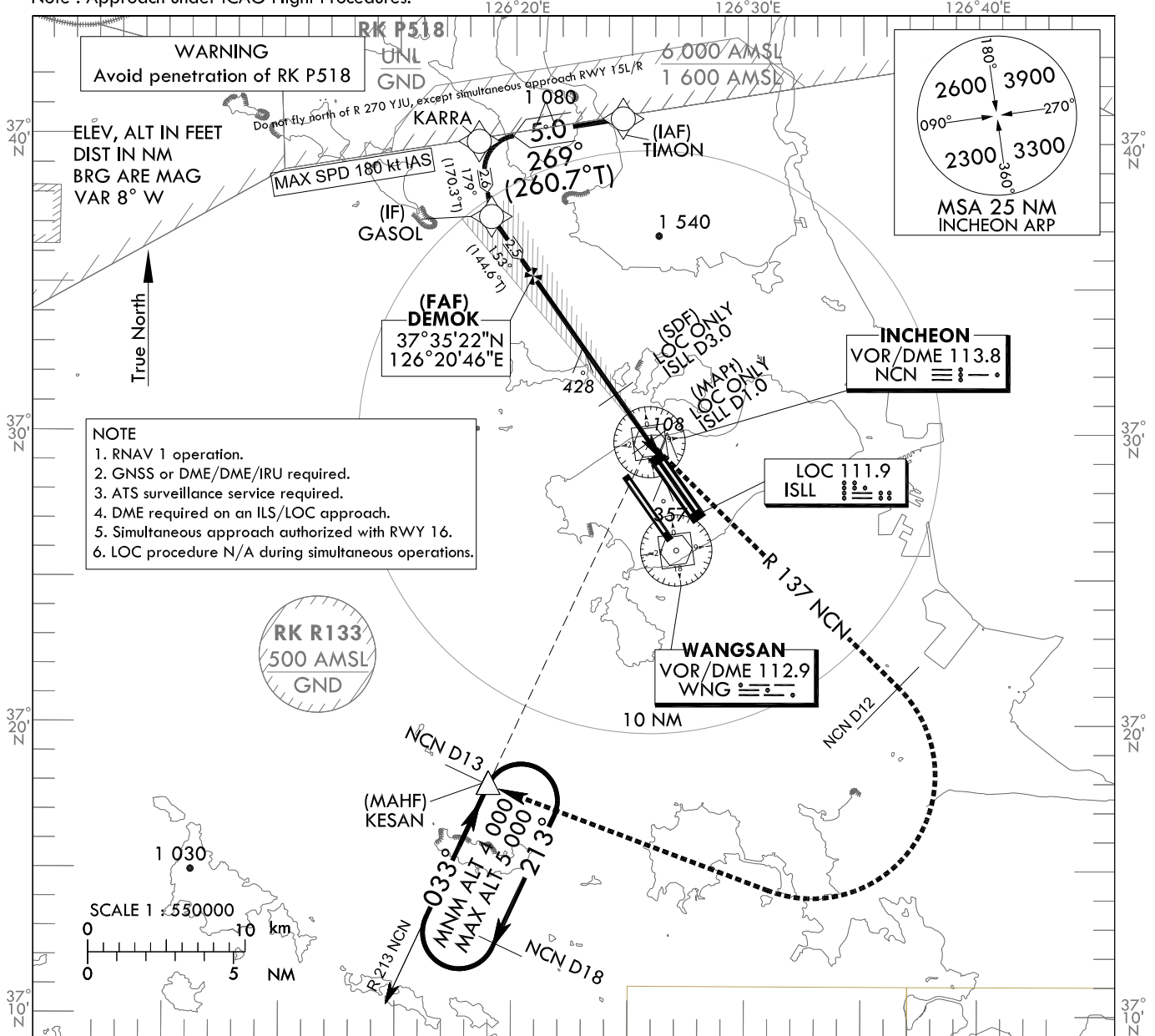
**INSTRUMENT
APPROACH
CHART - ICAO**

AERODROME ELEV 23 ft
HEIGHTS RELATED TO
THR RWY 15L - ELEV 23 ft

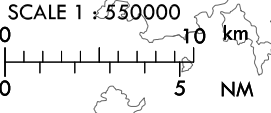
SEOUL APP 119.75
119.1
INCHEON TWR 118.2
118.8

SEOUL/Incheon Intl(RKSI)
ILS Z or LOC Z RWY 15L
CAT II & III

Note : Approach under ICAO Flight Procedures.

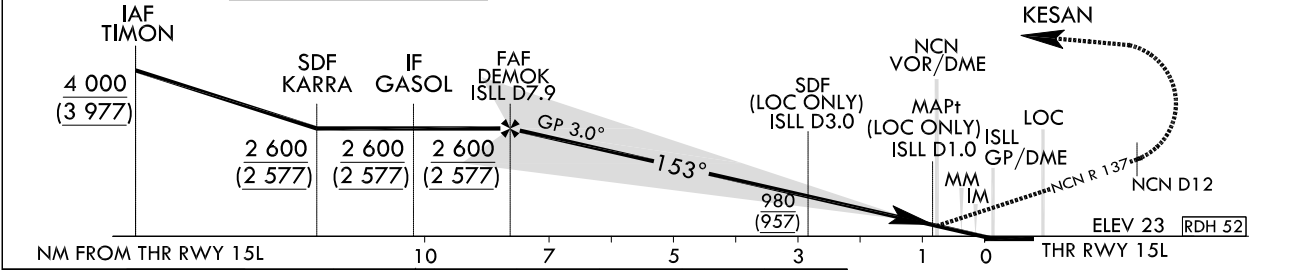


NOTE
1. RNAV 1 operation.
2. GNSS or DME/DME/IRU required.
3. ATS surveillance service required.
4. DME required on an ILS/LOC approach.
5. Simultaneous approach authorized with RWY 16.
6. LOC procedure N/A during simultaneous operations.



TRANSITION ALT 14 000
TRANSITION LVL FL 140

RECOMMENDED PROFILE		DME ISLL	7	6	5	4	3	2	1
Final Approach Gradient 5.35%, 325 ft/NM	ALT(HGT)	2 299	1 974	1 649	1 323	998	673	340	
		(2 276)	(1 951)	(1 626)	(1 300)	(973)	(650)	(317)	



CATEGORY	DA(DH)/MDA(MDH)	A				B		C		D		DL
		A		B		C		D				
Straight-in	CAT-I	FULL	223				RVR 550 m, VIS 800 m					
		ALS INOP	(200)				1 200 m					
	LOC	FULL	340				700 m					
		ALS INOP	(317)				1 400 m					
	CAT II		123(100)				300 m		300 m ² / 350 m			
	CAT IIIa		-				175 m					
CAT IIIb		-				75 m ² / 125 m						

MISSED APPROACH
Climb to 520 ft on RWY Heading then turn LEFT to intercept and follow R 137 NCN to 12 DME, continue climb to 4 000 ft RIGHT turn direct to KESAN. Hold as published.
1) For CAT D/DL aeroplane conducting an autoland.
2) Aeroplane use Fail-operational system.
* Timing Not authorized for defining MAPt.
* Circling Not authorized.

SEOUL/Incheon Intl(RKSI)
ILS Z or LOC Z RWY 15L
CAT II & III

AERONAUTICAL DATA TABULATION

ILS Z/LOC Z Approach to RWY 15L		
Fix / Point		Coordinates
TIMON(IAF)		37°40'48.0"N 126°24'36.1"E
KARRA(SDF)		37°39'59.6"N 126°18'23.2"E
GASOL(IF)		37°37'24.7"N 126°18'56.4"E
DEMOK(FAF)	BRG 152.61°/7.92NM ISLL	37°35'22.4"N 126°20'45.7"E
D3.0 ISLL(SDF LOC ONLY)	BRG 152.61°/2.98NM ISLL	37°31'20.2"N 126°24'21.7"E
D1.0 ISLL(MAPt LOC ONLY)	BRG 152.61°/0.98NM ISLL	37°29'42.2"N 126°25'49.0"E
NCN VOR/DME		37°29'41.7"N 126°25'49.2"E
THR RWY 15L		37°29'02.20"N 126°26'24.56"E
ISLL DME		37°28'56.4"N 126°26'35.6"E
Climb to 520 ft	HDG 153	-
D12 NCN	R 137 NCN/12.00NM NCN	37°22'06.2"N 126°37'29.9"E
KESAN	BRG 213.08°/13.00NM NCN	37°17'53.0"N 126°18'58.0"E

Change : Amended coordinate format.

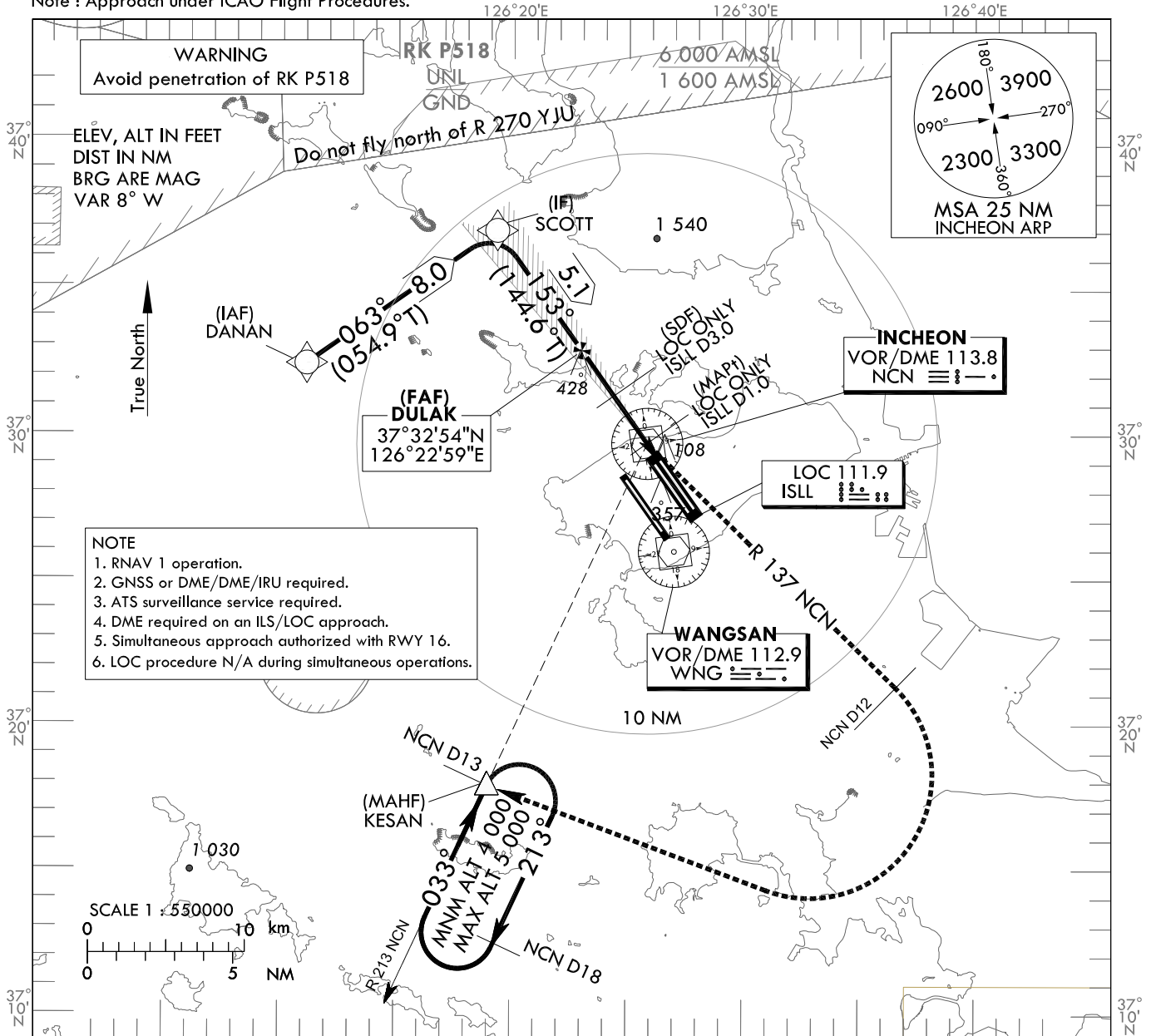
**INSTRUMENT
APPROACH
CHART - ICAO**

AERODROME ELEV 23 ft
HEIGHTS RELATED TO
THR RWY 15L - ELEV 23 ft

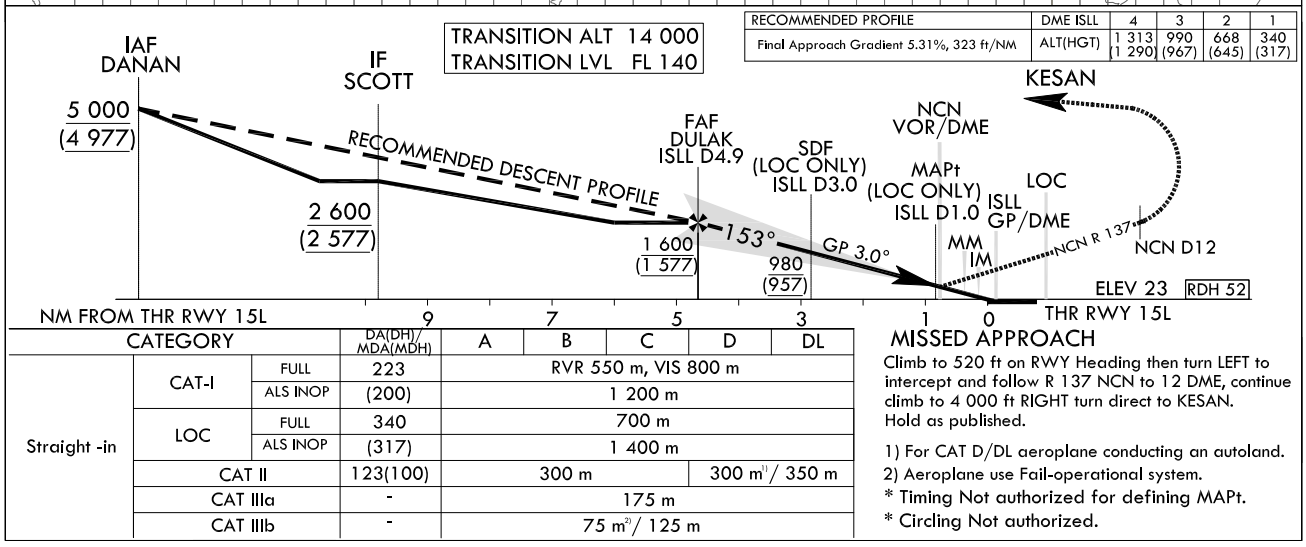
SEOUL APP 119.75
119.1
INCHEON TWR 118.2
118.8

SEOUL/Incheon Intl(RKSI)
ILS Y or LOC Y RWY 15L
CAT II & III

Note : Approach under ICAO Flight Procedures.



- NOTE**
1. RNAV 1 operation.
 2. GNSS or DME/DME/IRU required.
 3. ATS surveillance service required.
 4. DME required on an ILS/LOC approach.
 5. Simultaneous approach authorized with RWY 16.
 6. LOC procedure N/A during simultaneous operations.



SEOUL/Incheon Intl(RKSI)
ILS Y or LOC Y RWY 15L
CAT II & III

AERONAUTICAL DATA TABULATION

ILS Y/LOC Y Approach to RWY 15L			
Fix / Point		Coordinates	
DANAN(IAF)		37°32'26.0"N	126°11'04.0"E
SCOTT(IF)		37°37'01.6"N	126°19'17.0"E
DULAK(FAF)	BRG 152.51°/4.89NM ISLL	37°32'53.5"N	126°22'58.5"E
D3.0 ISLL(SDF LOC ONLY)	BRG 152.51°/2.98NM ISLL	37°31'20.2"N	126°24'21.7"E
D1.0 ISLL(MAPt LOC ONLY)	BRG 152.51°/0.98NM ISLL	37°29'42.2"N	126°25'49.0"E
NCN VOR/DME		37°29'41.7"N	126°25'49.2"E
THR RWY 15L		37°29'02.20"N	126°26'24.56"E
ISLL DME		37°28'56.4"N	126°26'35.6"E
Climb to 520 ft	HDG 153		-
D12 NCN	R 137 NCN/12.00NM NCN	37°22'06.2"N	126°37'29.9"E
KESAN	BRG 213.08°/13.00NM NCN	37°17'53.0"N	126°18'58.0"E

Change : Amended coordinate format.

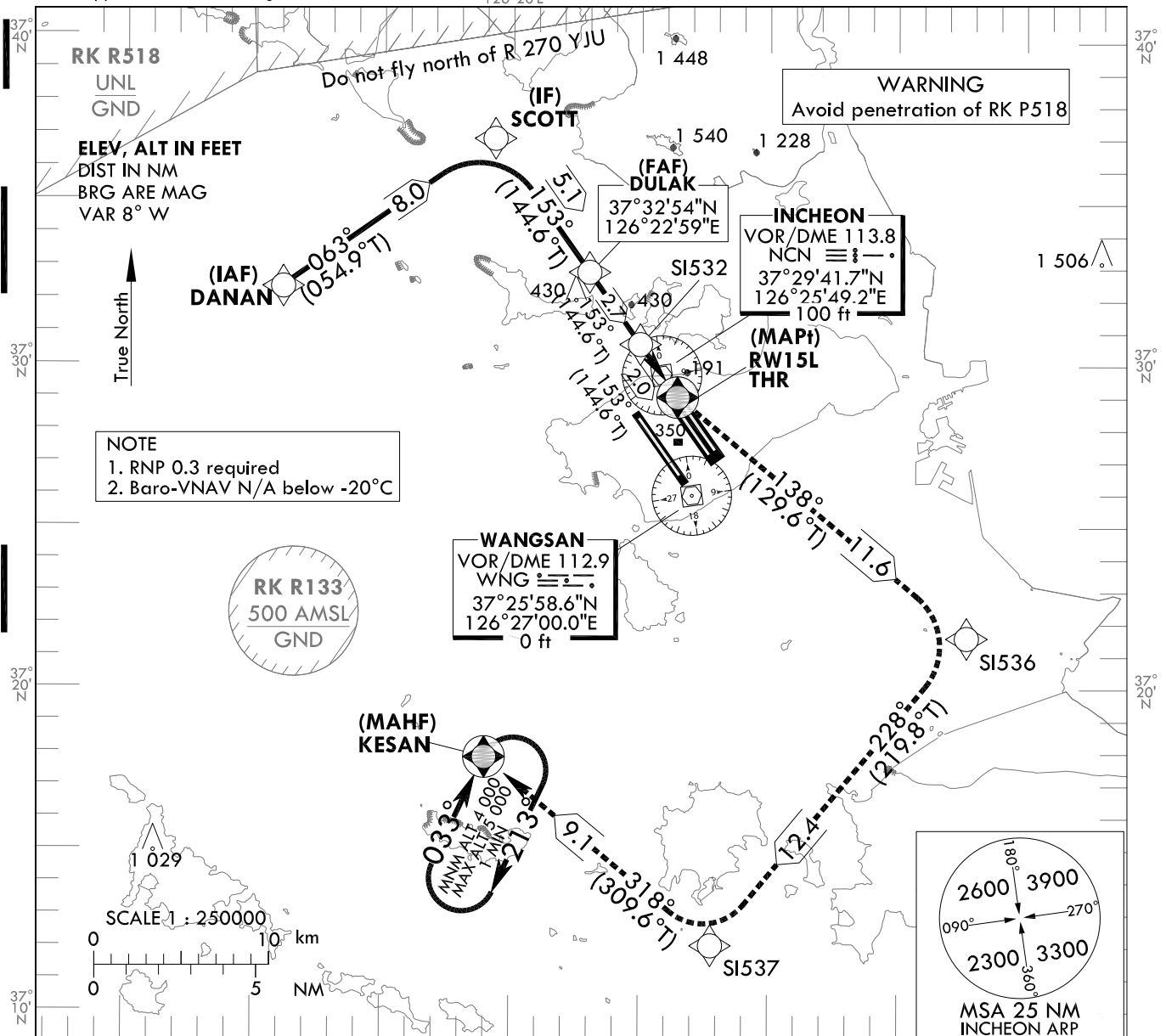
**INSTRUMENT
APPROACH
CHART - ICAO**

AERODROME ELEV 23 ft
HEIGHTS RELATED TO
THR RWY 15L - ELEV 23 ft

SEOUL APP 119.75
119.1
INCHEON TWR 118.2
118.8

SEOUL/Incheon Intl(RKSI)
RNAV(GNSS)
RWY 15L

Note : Approach under ICAO Flight Procedures.

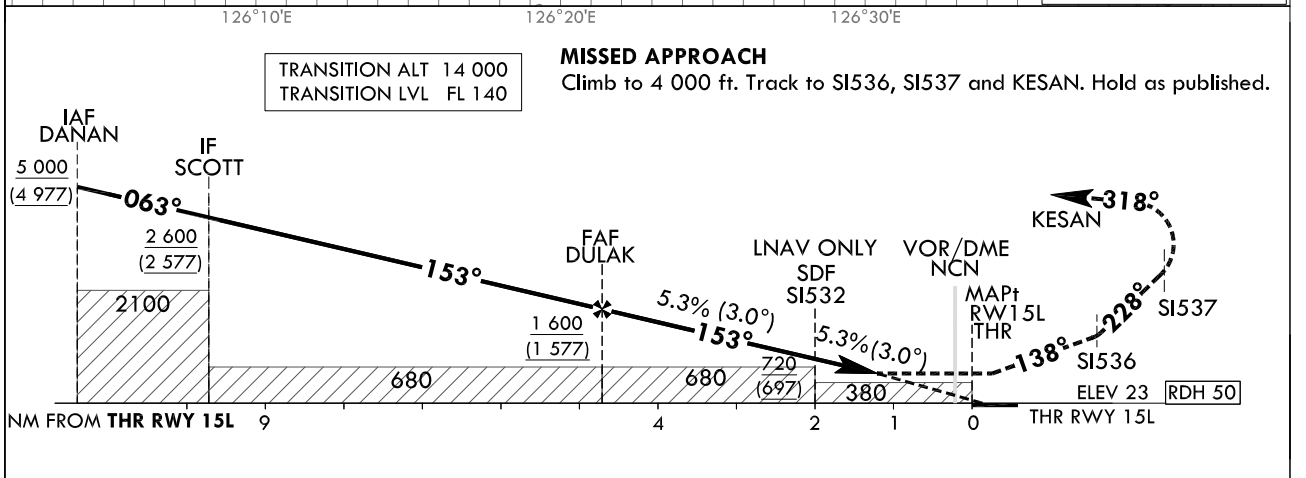


NOTE
1. RNP 0.3 required
2. Baro-VNAV N/A below -20°C

RK R133
500 AMSL
GND

WANGSAN
VOR/DME 112.9
WNG
37°25'58.6"N
126°27'00.0"E
0 ft

2600 3900
090° 270°
2300 3300
360°
MSA 25 NM
INCHEON ARP



TRANSITION ALT 14 000
TRANSITION LVL FL 140

MISSED APPROACH
Climb to 4 000 ft. Track to SI536, SI537 and KESAN. Hold as published.

CATEGORY		MDA(H)/DA(H)	A	B	C	D	Knots						
LNAV	FULL	450 (427)		1 300 m			Rate of descent	V/V fpm	323	485	647	809	970
	ALS INOP			2 000 m									
LNAV/VNAV	FULL	430 (407)		1 200 m			* Timing Not authorized for defining MAPt. * Circling Not authorized.						
	ALS INOP			1 900 m									

Change : Amended coordinate and radial format.

SEOUL/Incheon Intl(RKSI)
RNAV(GNSS)
RWY 15L

AERONAUTICAL DATA TABULATION

Instrument Approach Procedure Coding Tables

RNAV(GNSS) RWY 15L

Serial Number	Path Descriptor	Waypoint Identifier	Fly-over	Course/Track °M(°T)	Distance (NM)	Turn direction	Altitude (ft)	Speed (kt)	Coordinates	VPA/TCH	Navigation specification	Remarks
001	IF	DANAN	-	-	-	-	+5 000	-	37°32'26.0"N 126°11'04.0"E (R 291 NCN/D12, R 305 WNG/D14)	-	RNP APCH	IAF
002	TF	SCOTT	-	063 (054.9)	8.0	-	+2 600	-	37°37'01.6"N 126°19'17.0"E (R 333 NCN/D9, R 339 WNG/D13)	-	RNP APCH	IF
003	TF	DULAK	-	153 (144.6)	5.1	-	+1 600	-	37°32'53.5"N 126°22'58.5"E (R 333 NCN/D4, R 343 WNG/D8)	-	RNP APCH	FAF
004	TF	S1532	-	153 (144.6)	2.7	-	+720	-	37°30'40.2"N 126°24'57.3"E (R 333 NCN/D1, R 349 WNG/D5)	-	RNP APCH	SDF
005	TF	RW15L	Y	153 (144.6)	2.0	-	+450	-	37°29'02.20"N 126°26'24.56"E (R 152 NCN/D1, R 359 WNG/D3)	-3.01/50	RNP APCH	MAPt
006	TF	S1536	-	138 (129.6)	11.6	-	-	-	37°21'35.4"N 126°37'39.8"E (R 139 NCN/D12, R 125 WNG/D10)	-	RNP APCH	-
007	TF	S1537	-	228 (219.8)	12.4	-	-	-	37°12'03.9"N 126°27'45.9"E (R 183 NCN/D18, R 185 WNG/D14)	-	RNP APCH	-
008	TF	KESAN	Y	318 (309.6)	9.1	-	+4 000	-	37°17'53.0"N 126°18'58.0"E (R 213 NCN/D13, R 226 WNG/D10)	-	RNP APCH	-
009	HM	KESAN	Y	033 (025.0)	-	R	-5 000 +4 000	-	37°17'53.0"N 126°18'58.0"E (R 213 NCN/D13, R 226 WNG/D10)	-	RNP APCH	1 min (Outbound timing)

Change : Amended coordinate format.

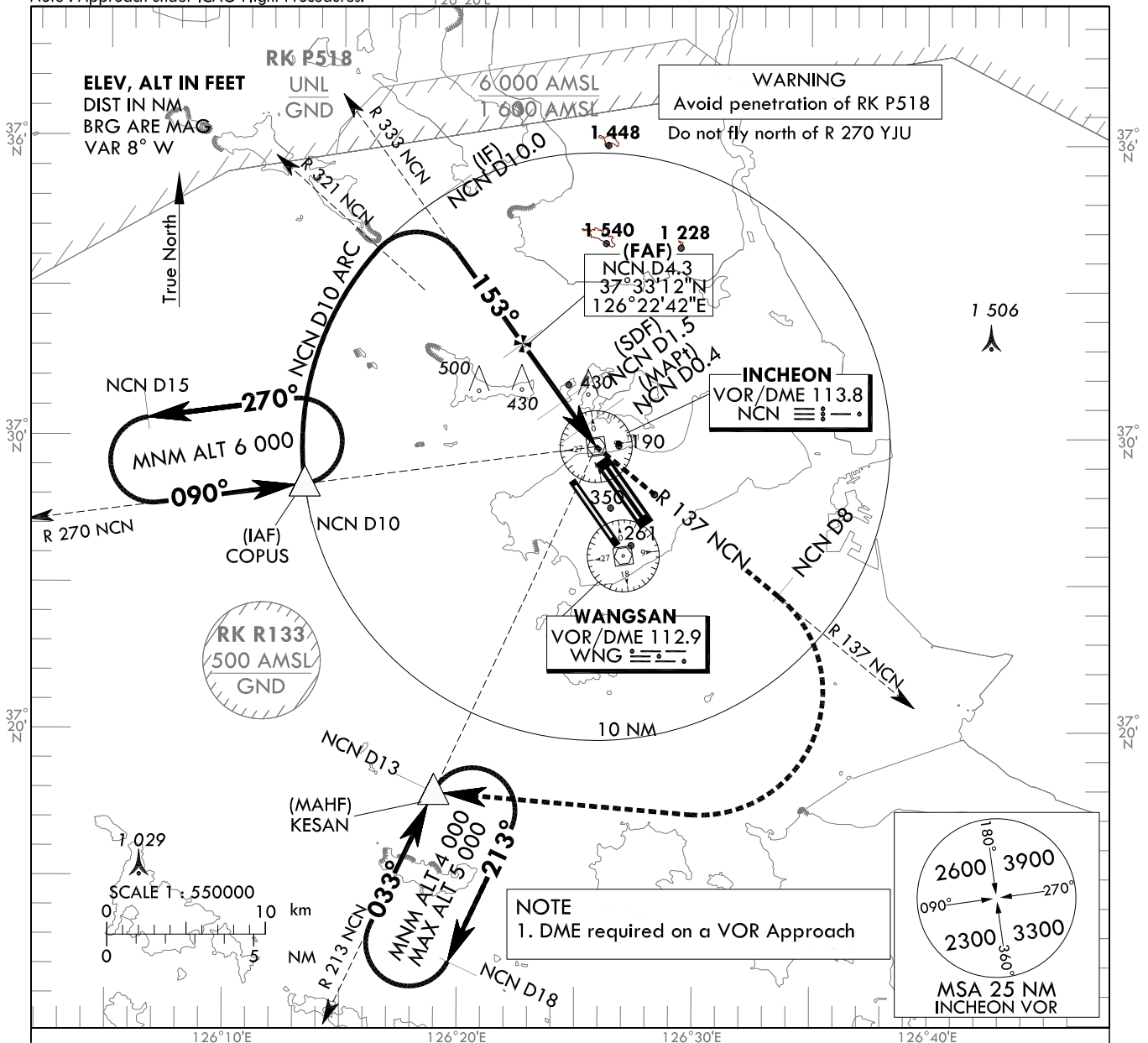
**INSTRUMENT
APPROACH
CHART - ICAO**

AERODROME ELEV 23 ft
HEIGHTS RELATED TO
THR RWY 15L - ELEV 23 ft

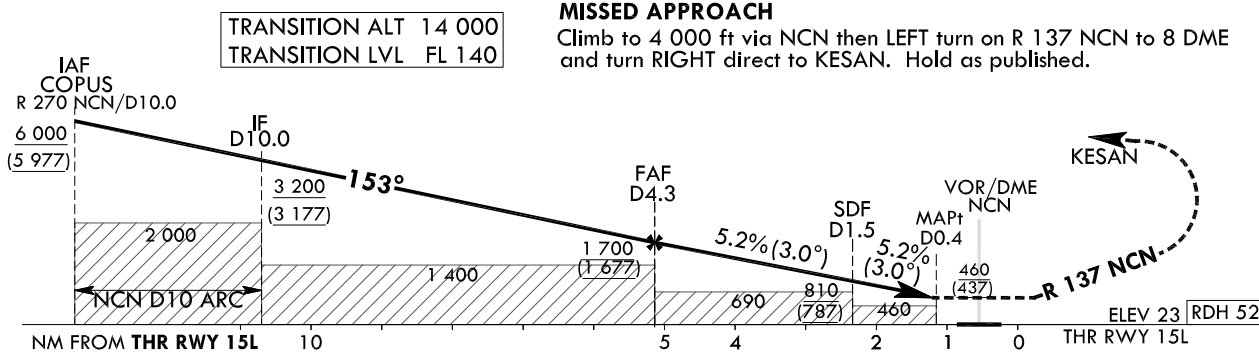
SEOUL APP 119.75
119.1
INCHEON TWR 118.2
118.8

**SEOUL/Incheon Intl(RKSI)
VOR
RWY 15L**

Note : Approach under ICAO Flight Procedures.



RECOMMENDED DESCENT PROFILE		DME NCN	3	2	1
Final Approach Gradient 5.2%(317.9 ft/NM)to SDF, 5.2%(318.3 ft/NM) to THR		ALT(HGT)	1 287(1 264)	969(946)	650(628)



CATEGORY	FULL	ALS INOP	MDA(MDH)	A				B				C				D				Knots	60	90	120	150	180
				A	B	C	D	A	B	C	D	A	B	C	D	A	B	C	D						
Straight-in			460 (437)	1 600 m				Rate of descent				V/V fpm				318	477	636	795	954					
				2 300 m				* Timing Not authorized for defining MAPt.				* Circling Not authorized.													

SEOUL/Incheon Intl(RKSI)

VOR

RWY 15L

AERONAUTICAL DATA TABULATION

VOR Approach to RWY 15L from COPUS		
Fix / Point		Coordinates
COPUS(IAF)		37°28'21.8"N 126°13'22.0"E
D10 NCN(IF)	BRG 153.00°/10.00NM NCN	37°37'52.4"N 126°18'33.7"E
D4.3 NCN(FAF)	BRG 153.00°/4.30NM NCN	37°33'12.4"N 126°22'42.4"E
D1.5 NCN(SDF)	BRG 153.00°/1.50NM NCN	37°30'55.0"N 126°24'44.2"E
D0.4 NCN(MAPt)	BRG 153.00°/0.40NM NCN	37°30'01.0"N 126°25'32.1"E
NCN VOR/DME		37°29'41.7"N 126°25'49.2"E
THR RWY15L	Final approach descent angle 2.99°(FAF - SDF)/3.00°(SDF - THR)	37°29'02.20"N 126°26'24.56"E
D8 NCN	R 137 NCN/8.00NM NCN	37°24'40.1"N 126°33'39.1"E
KESAN	BRG 283.39°/13.00NM NCN	37°17'53.0"N 126°18'58.0"E

Change : Amended coordinate format.

INSTRUMENT APPROACH CHART - ICAO

AERODROME ELEV 23 ft
HEIGHTS RELATED TO
THR RWY 15R - ELEV 23 ft

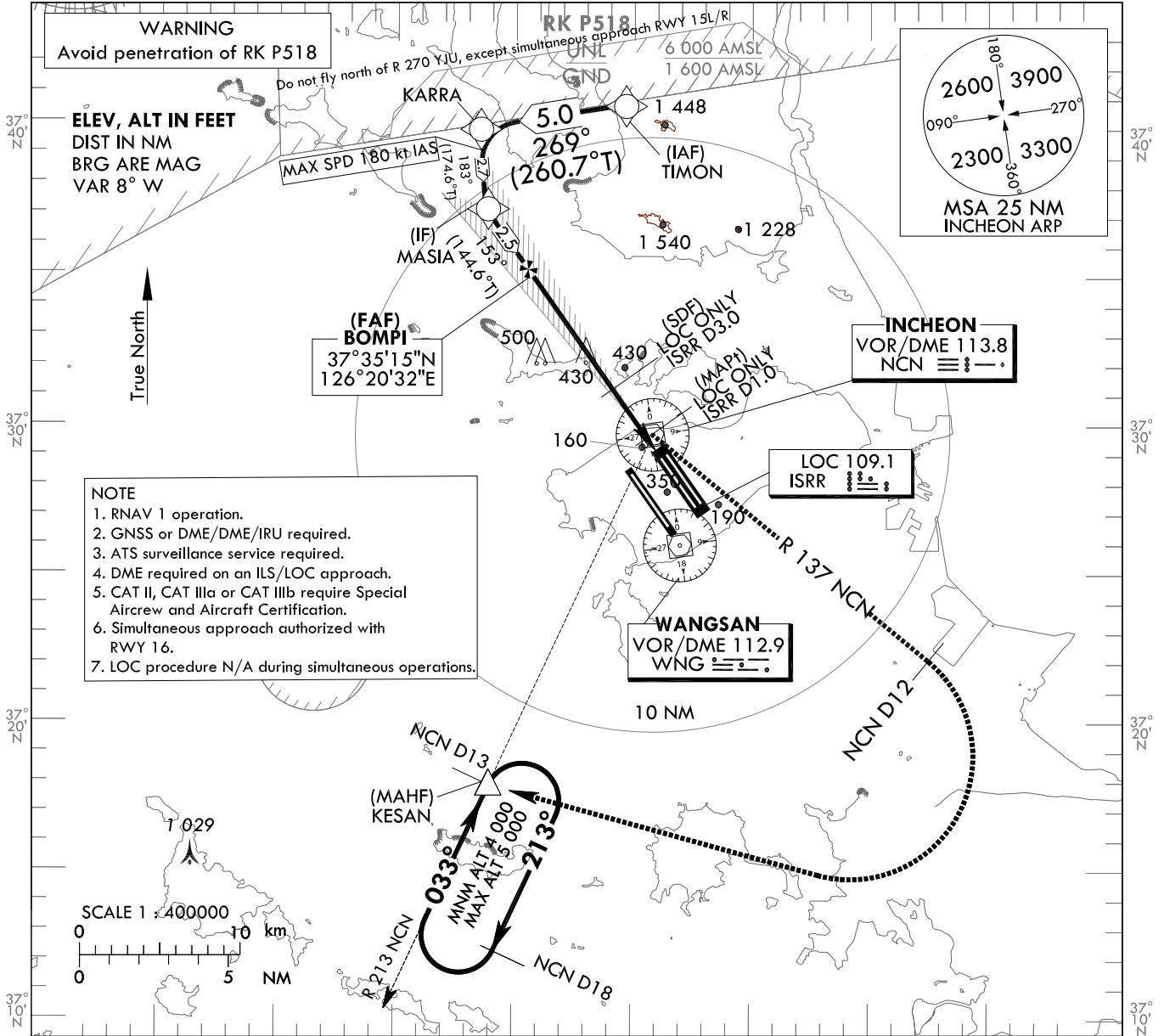
SEOUL APP 119.75
119.1
INCHEON TWR 118.2
118.8

SEOUL/Incheon Intl(RKSI)
ILS Z or LOC Z RWY 15R
CAT II & III

Note : Approach under ICAO Flight Procedures.

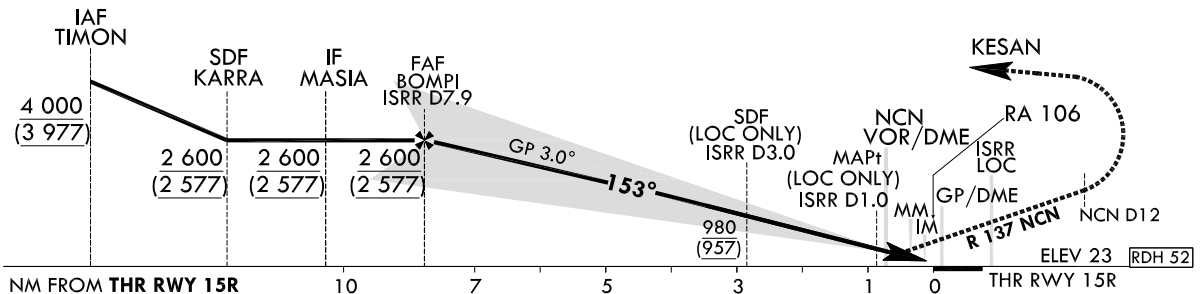
126°20'E

126°40'E



TRANSITION ALT	14 000
TRANSITION LVL	FL 140

RECOMMENDED PROFILE	DME ISRR	7	6	5	4	3	2
Final Approach Gradient 5.35%, 325 ft/NM	ALT(HGT)	2 299 (2 276)	1 974 (1 951)	1 649 (1 626)	1 323 (1 300)	998 (975)	673 (650)



CATEGORY	DA(DH)/MDA(MDH)	A B C D DL				
		RVR	550 m	VIS	800 m	
Straight-in	CAT-I FULL	223 (200)				
	CAT-I ALS INOP			1 200 m		
	LOC GP INOP	370 (347)		900 m		
	LOC GP & ALS INOP			1 600 m		
	CAT II	123(100)		300 m		300 m ¹⁾ /350 m
CAT IIIa	-			175 m		
CAT IIIb	-			75 m ²⁾ /125 m		

MISSED APPROACH
Climb to 520 ft on RWY Heading then turn LEFT to intercept and follow R 137 NCN to 12 DME, continue climb to 4 000 ft RIGHT turn direct to KESAN. Hold as published.

* Timing Not authorized for defining MAPt.
* Circling Not authorized.

1) For CAT D/DL aeroplane conducting an autoland.
2) Aeroplane use Fail-operational system.

SEOUL/Incheon Intl(RKSI)
ILS Z or LOC Z RWY 15R
CAT II & III

AERONAUTICAL DATA TABULATION

ILS/LOC Approach to RWY 15R		
Fix / Point		Coordinates
TIMON(IAF)		37°40'48.0"N 126°24'36.1"E
KARRA(SDF)		37°39'59.6"N 126°18'23.2"E
MASIA(IF)		37°37'16.9"N 126°18'42.6"E
BOMPI(FAF)	BRG 152.61°/7.92 NM ISRR	37°35'14.6"N 126°20'31.9"E
D3.0 ISRR(SDF LOC ONLY)	BRG 152.61°/3.00 NM ISRR	37°31'13.4"N 126°24'07.1"E
D1.0 ISRR(MAPt LOC ONLY)	BRG 152.61°/1.00 NM ISRR	37°29'35.3"N 126°25'34.4"E
NCN VOR/DME		37°29'41.7"N 126°25'49.2"E
THR RWY15R		37°28'54.44"N 126°26'10.82"E
ISRR DME		37°28'48.7"N 126°26'21.9"E
Climb to 520 ft	HDG 153	-
D12 NCN	R 137 NCN/12.00 NM NCN	37°22'06.2"N 126°37'29.9"E
KESAN	BRG 213.07°/13.00 NM NCN	37°17'53.0"N 126°18'58.0"E

Change : Amended coordinate format.

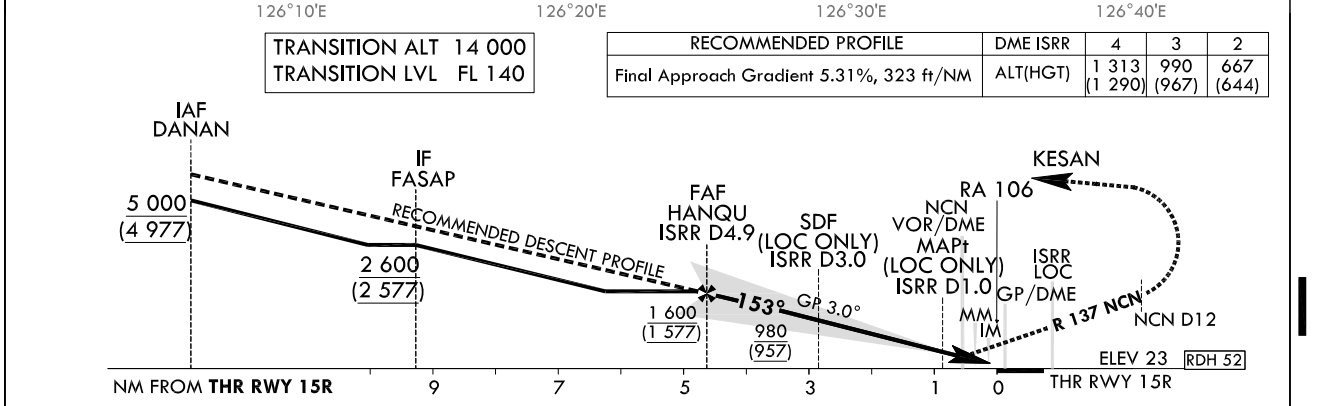
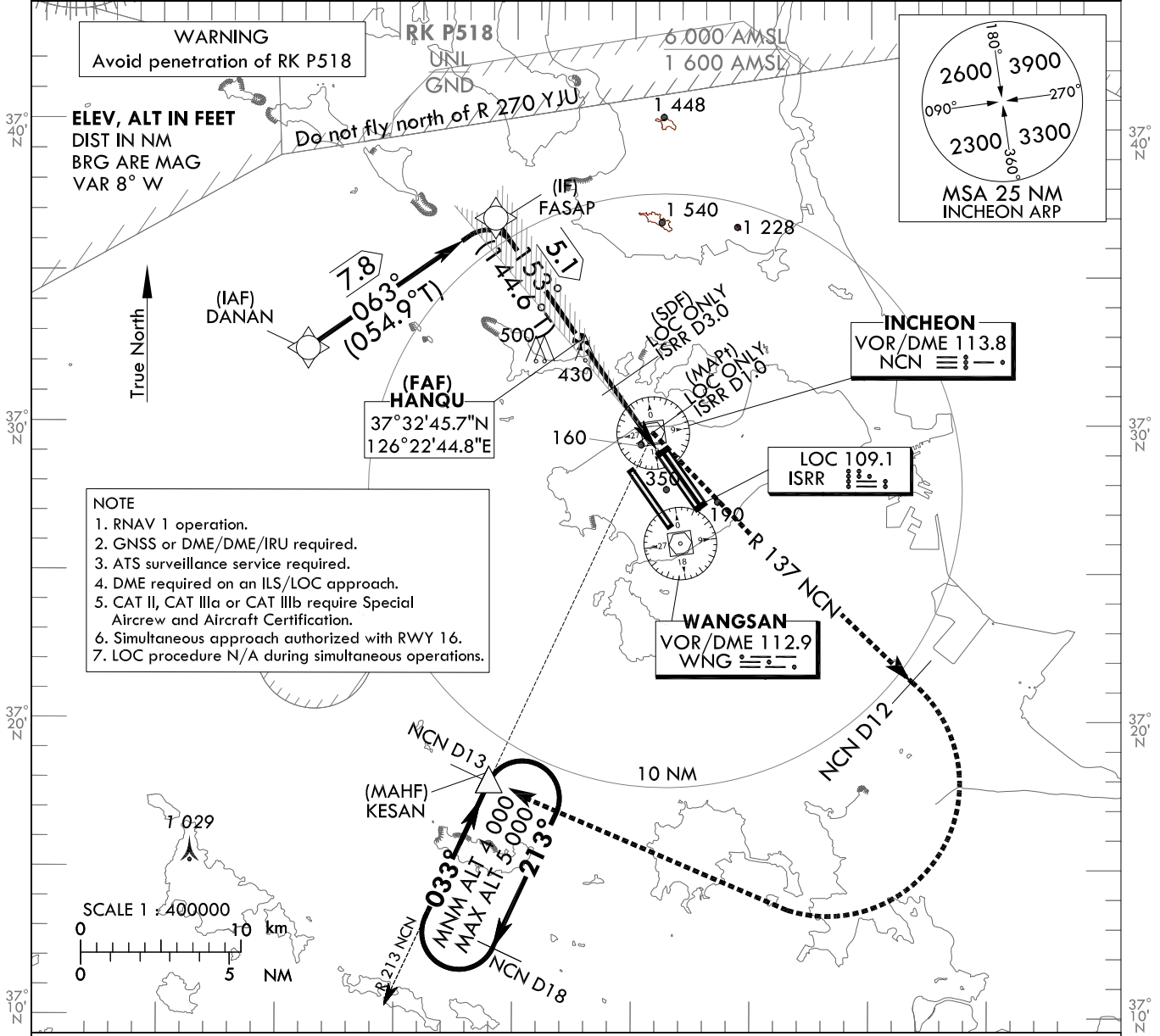
INSTRUMENT APPROACH CHART - ICAO

AERODROME ELEV 23 ft
HEIGHTS RELATED TO
THR RWY 15R - ELEV 23 ft
126°20'E

SEOUL APP 119.75
119.1
INCHEON TWR 118.2
118.8

SEOUL/Incheon Intl(RKSI)
ILS Y or LOC Y RWY 15R
CAT II & III

Note : Approach under ICAO Flight Procedures.



CATEGORY	DA(DH)/MDA(MDH)	A	B	C	D	DL
		CAT-I FULL 223 (200) CAT-I ALS INOP 370 (347)	RVR 550 m, VIS 800 m		1 200 m	900 m
LOC GP INOP 370 (347) GP & ALS INOP				1 600 m		
CAT II	123(100)	300 m			300 m ¹⁾ /350 m	
CAT IIIa	-			175 m		
CAT IIIb	-			75 m ²⁾ /125 m		

MISSED APPROACH
Climb to 520 ft on RWY Heading then turn LEFT to intercept and follow R 137 NCN to 12 DME, continue climb to 4 000 ft RIGHT turn direct to KESAN.
Hold as published.

* Timing Not authorized for defining MAPt.
* Circling Not authorized.

1) For CAT D/DL aeroplane conducting an autoland.
2) Aeroplane use Fail-operational system.

Change : Amended coordinate and radial format.

SEOUL/Incheon Intl(RKSI)
ILS Y or LOC Y RWY 15R
CAT II & III

AERONAUTICAL DATA TABULATION

ILS/LOC Approach to RWY 15R from DANAN to FASAP(IF)	
Fix / Point	Coordinates
DANAN(IAF)	37°32'26.0"N 126°11'04.0"E
FASAP(IF)	37°36'53.8"N 126°19'03.3"E

ILS/LOC Approach to RWY 15R from FASAP(IF) to MAHF	
Fix / Point	Coordinates
HANQU(FAF) BRG 152.61°/4.89 NM ISRR	37°32'45.7"N 126°22'44.8"E
D3.0 ISRR(SDF) (LOC ONLY) BRG 152.61°/3.00 NM ISRR	37°31'13.4"N 126°24'07.1"E
D1.0 ISRR(MAPt) (LOC ONLY) BRG 152.61°/1.00 NM ISRR	37°29'35.3"N 126°25'34.4"E
NCN VOR/DME	37°29'41.7"N 126°25'49.2"E
THR RWY 15R	37°28'54.44"N 126°26'10.82"E
ISRR DME	37°28'48.7"N 126°26'21.9"E
Climb to 520 ft HDG 153	-
D12 NCN	-
KESAN BRG 213.07°/13.00 NM NCN	37°17'53.0"N 126°18'58.0"E

Change : Amended coordinate format.

**INSTRUMENT
APPROACH
CHART - ICAO**

AERODROME ELEV 23 ft
HEIGHTS RELATED TO
THR RWY 15R - ELEV 23 ft

SEOUL APP	119.75
	119.1
INCHEON TWR	118.2
	118.8

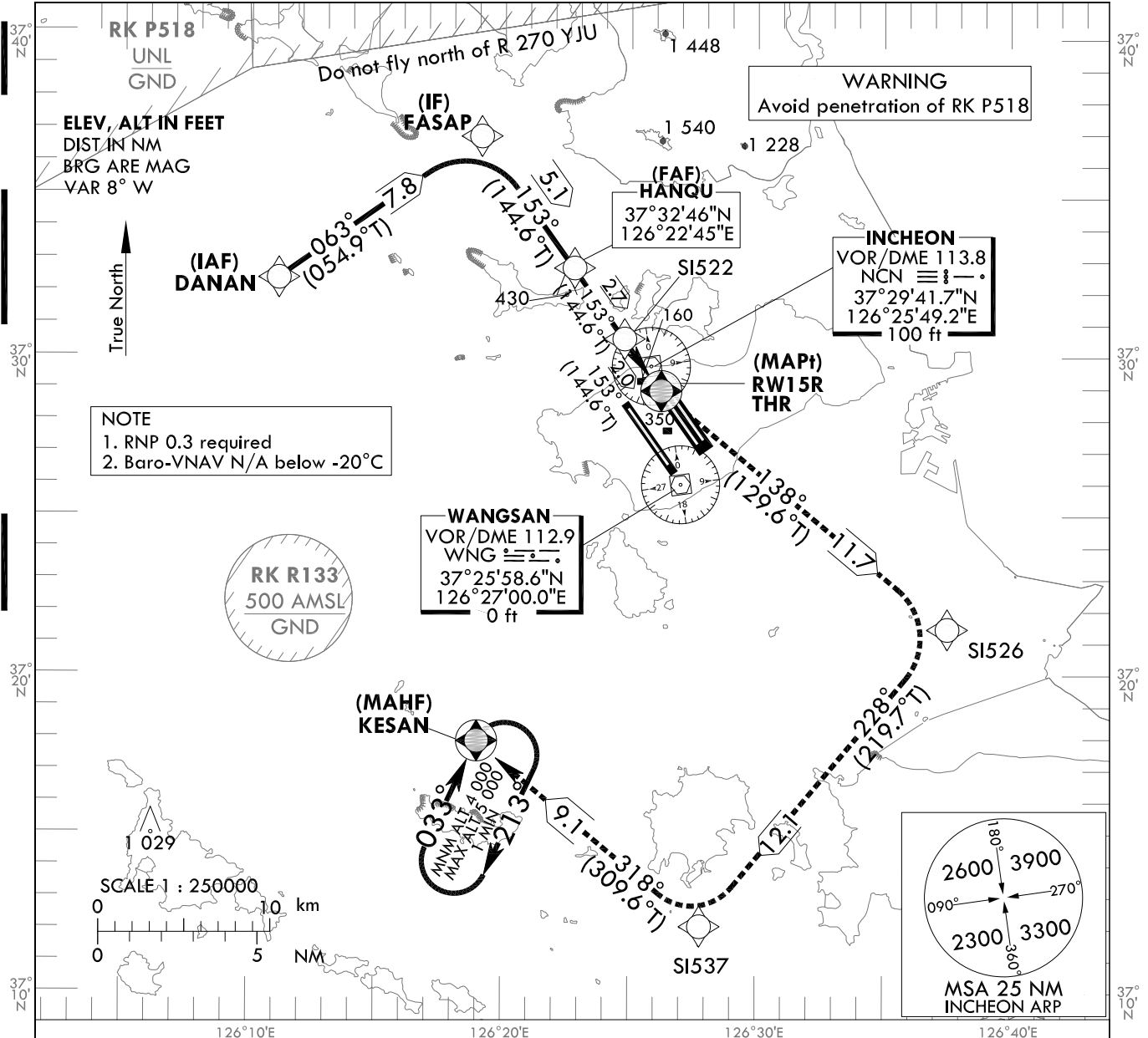
**SEOUL/Incheon Intl(RKSI)
RNAV(GNSS)
RWY 15R**

Note : Approach under ICAO Flight Procedures.

126°20'E

126°30'E

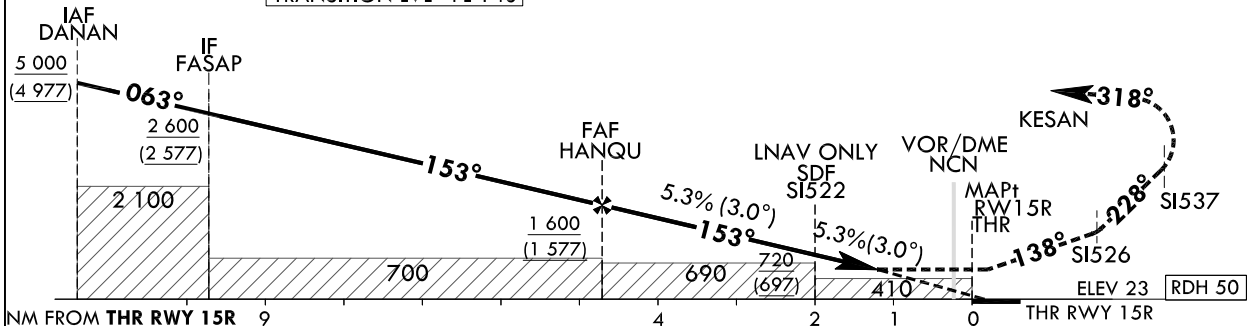
126°40'E



TRANSITION ALT 14 000
TRANSITION LVL FL 140

MISSED APPROACH

Climb to 4 000 ft. Track to SI526, SI537 and KESAN. Hold as published.



CATEGORY		MDA(H)/DA(H)	A	B	C	D	Knots						
LNAV	FULL	540 (517)		1 600 m			Rate of descent	V/V fpm	323	485	647	809	970
	ALS INOP			2 400 m									
LNAV/VNAV	FULL	430 (407)		1 200 m			* Timing Not authorized for defining MAPt. * Circling Not authorized.						
	ALS INOP			1 900 m									

Change : Amended coordinate and radial format.

SEOUL/Incheon Intl(RKSI)
RNAV(GNSS)
RWY 15R

AERONAUTICAL DATA TABULATION

Instrument Approach Procedure Coding Tables

RNAV(GNSS) RWY 15R

Serial Number	Path Descriptor	Waypoint Identifier	Fly-over	Course/Track M(T)	Distance (NM)	Turn direction	Altitude (ft)	Speed (kt)	Coordinates	VPA/TCH	Navigation specification	Remarks
001	IF	DANAN	-	-	-	-	+5 000	-	37°32'26.0"N 126°11'04.0"E (R 291 NCN/D12, R 305 WNG/D14)	-	RNP APCH	IAF
002	TF	FASAP	-	063 (054.9)	7.8	-	+2 600	-	37°36'53.8"N 126°19'03.3"E (R 331 NCN/D9, R 338 WNG/D13)	-	RNP APCH	IF
003	TF	HANQU	-	153 (144.6)	5.1	-	+1 600	-	37°32'45.7"N 126°22'44.8"E (R 329 NCN/D4, R 341 WNG/D8)	-	RNP APCH	FAF
004	TF	S1522	-	153 (144.6)	2.7	-	+720	-	37°30'32.4"N 126°24'43.6"E (R 322 NCN/D1, R 346 WNG/D5)	-	RNP APCH	SDF
005	TF	RW15R	Y	153 (144.6)	2.0	-	+540	-	37°28'54.4"N 126°26'10.8"E (R 168 NCN/D1, R 355 WNG/D3)	-3.01/50	RNP APCH	MAPt
006	TF	S1526	-	138 (129.6)	11.7	-	-	-	37°21'25.5"N 126°37'29.3"E (R 140 NCN/D12, R 126 WNG/D10)	-	RNP APCH	-
007	TF	S1537	-	228 (219.8)	12.1	-	-	-	37°12'03.9"N 126°27'45.9"E (R 183 NCN/D18, R 185 WNG/D14)	-	RNP APCH	-
008	TF	KESAN	Y	318 (309.6)	9.1	-	+4 000	-	37°17'53.0"N 126°18'58.0"E (R 213 NCN/D13, R 226 WNG/D10)	-	RNP APCH	-
009	H/M	KESAN	Y	033 (025.0)	-	R	-5 000 +4 000	-	37°17'53.0"N 126°18'58.0"E (R 213 NCN/D13, R 226 WNG/D10)	-	RNP APCH	¹ min (Outbound timing)

Change : Amended coordinate format.

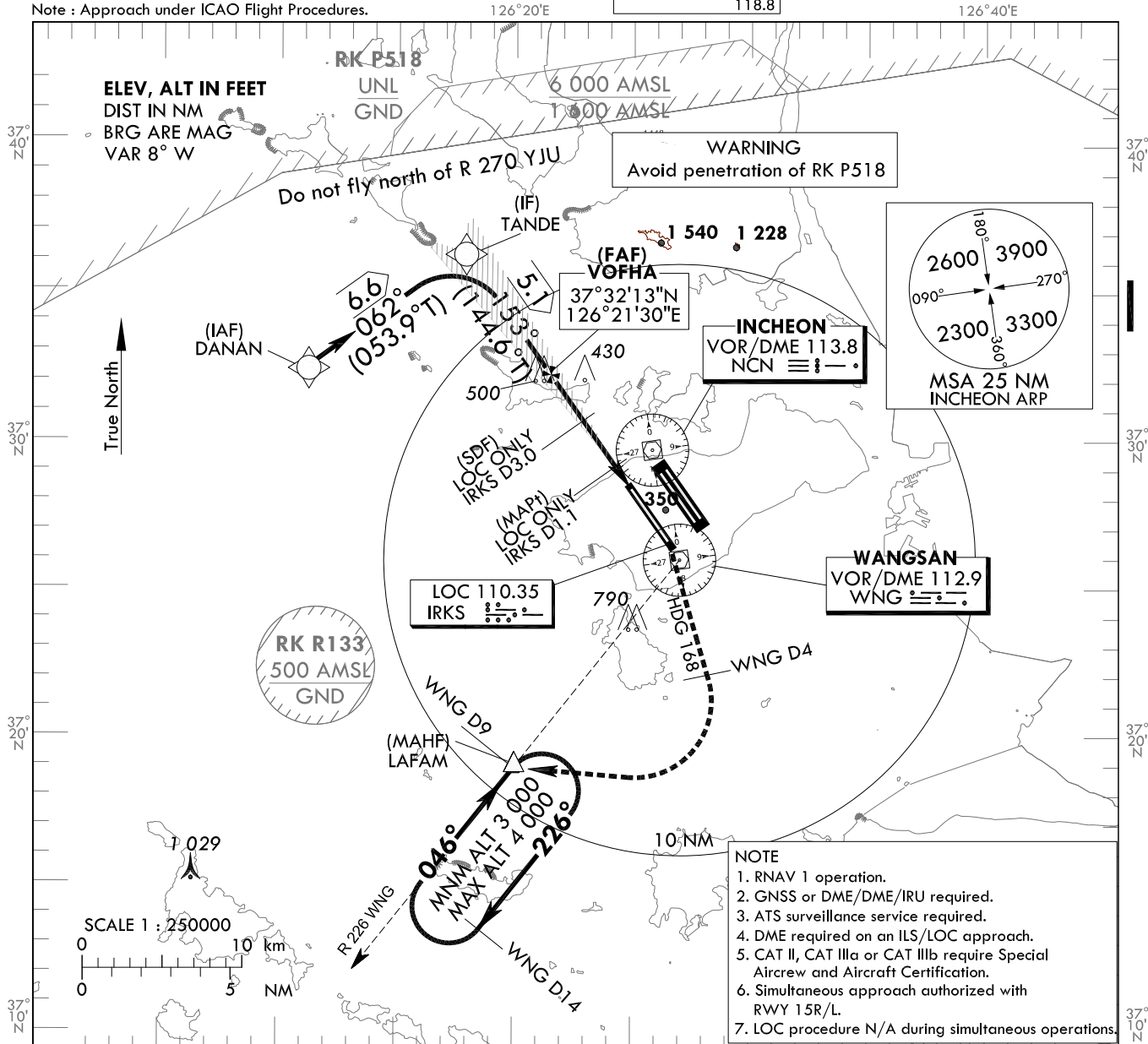
**INSTRUMENT
APPROACH
CHART - ICAO**

AERODROME ELEV 23 ft
HEIGHTS RELATED TO
THR RWY 16 - ELEV 23 ft

SEOUL APP 119.75
119.1
INCHEON TWR 118.2
118.8

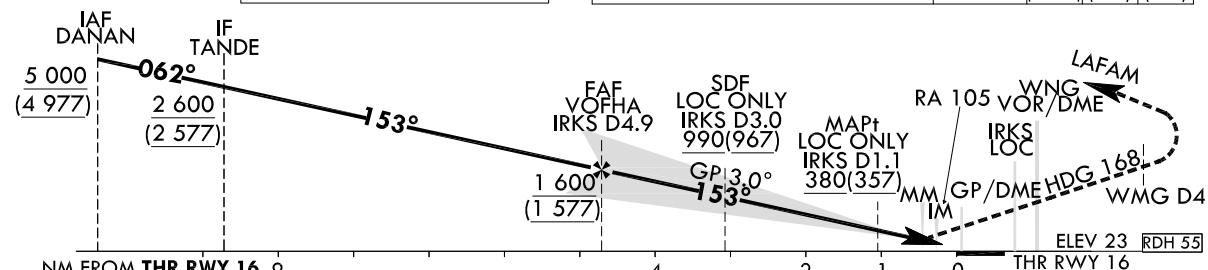
**SEOUL/Incheon Intl(RKSI)
ILS or LOC RWY 16
CAT II & III**

Note : Approach under ICAO Flight Procedures.



TRANSITION ALT 14 000
TRANSITION LVL FL 140

RECOMMENDED PROFILE	DME IRKS	4	3	2
Final Approach Gradient 5.24%, 318 ft/NM	ALT(HGT)	1 310 (1 287)	986 (963)	663 (640)



CATEGORY	DA(DH)/MDA(MDH)	A					B					C					D					DL				
		A					B					C					D					DL				
Straight-in	CAT-I (CG 2.5%)	FULL	436 (413)					1 200 m					1 900 m					RVR 550 m, VIS 800 m								
		ALS INOP	223 (200)					1 200 m					900 m					1 600 m								
	CAT-I (CG 4.0%)	FULL	380 (357)					1 200 m					900 m					1 600 m								
		ALS INOP	123(100)					300 m					300 m ¹⁾ /350 m													
	LOC	GP INOP GP & ALS INOP	-					175 m					75 m ²⁾ /125 m													
	CAT II		-																							

MISSED APPROACH
Climb to 500 ft on RWY Heading then RIGHT turn on HDG 168° to WNG 4 DME, continue climb to 3 000 ft RIGHT turn direct to LAFAM. Hold as published.

NOTE
1. Missed approach turn limited to 210 kt IAS maximum.
2. Missed approach minimum climb gradient of 2.5% to 3 000 ft (DH 413), 4% to 3 000 ft (DH 200 or 100).

* Timing Not authorized for defining MAPt.
* Circling Not authorized.

1) For CAT D/DL aeroplane conducting an autoland.
2) Aeroplane use Fail-operational system.

Change : Amended coordinate format.

SEOUL/Incheon Intl(RKSI)
ILS or LOC RWY 16
CAT II & III

AERONAUTICAL DATA TABULATION

ILS/LOC Approach to RWY 16 from DANAN		
Fix / Point		Coordinates
DANAN(IAF)		37°32'26.0"N 126°11'04.0"E
TANDE(IF)	BRG 061.75°/6.64 NM	37°36'21.0"N 126°17'48.8"E
VOFHA (FAF)	BRG 152.51°/4.90 NM IRKS	37°32'12.9"N 126°21'30.4"E
D3.0 IRKS(SDF LOC ONLY)	BRG 152.51°/3.00 NM IRKS	37°30'40.7"N 126°22'52.6"E
D1.1 IRKS(MAPt LOC ONLY)	BRG 152.51°/1.10 NM IRKS	37°29'07.6"N 126°24'15.5"E
THR RWY16		37°28'22.11"N 126°24'56.05"E
IRKS DME		37°28'11.4"N 126°24'59.7"E
WNG VOR/DME		37°25'58.6"N 126°27'00.0"E
Climb to 500 ft	HDG 153	-
D4 WNG		-
LAFAM	BRG 282.42°/9.00 NM WNG	37°18'55.0"N 126°19'59.0"E

Change : Amended coordinate format.

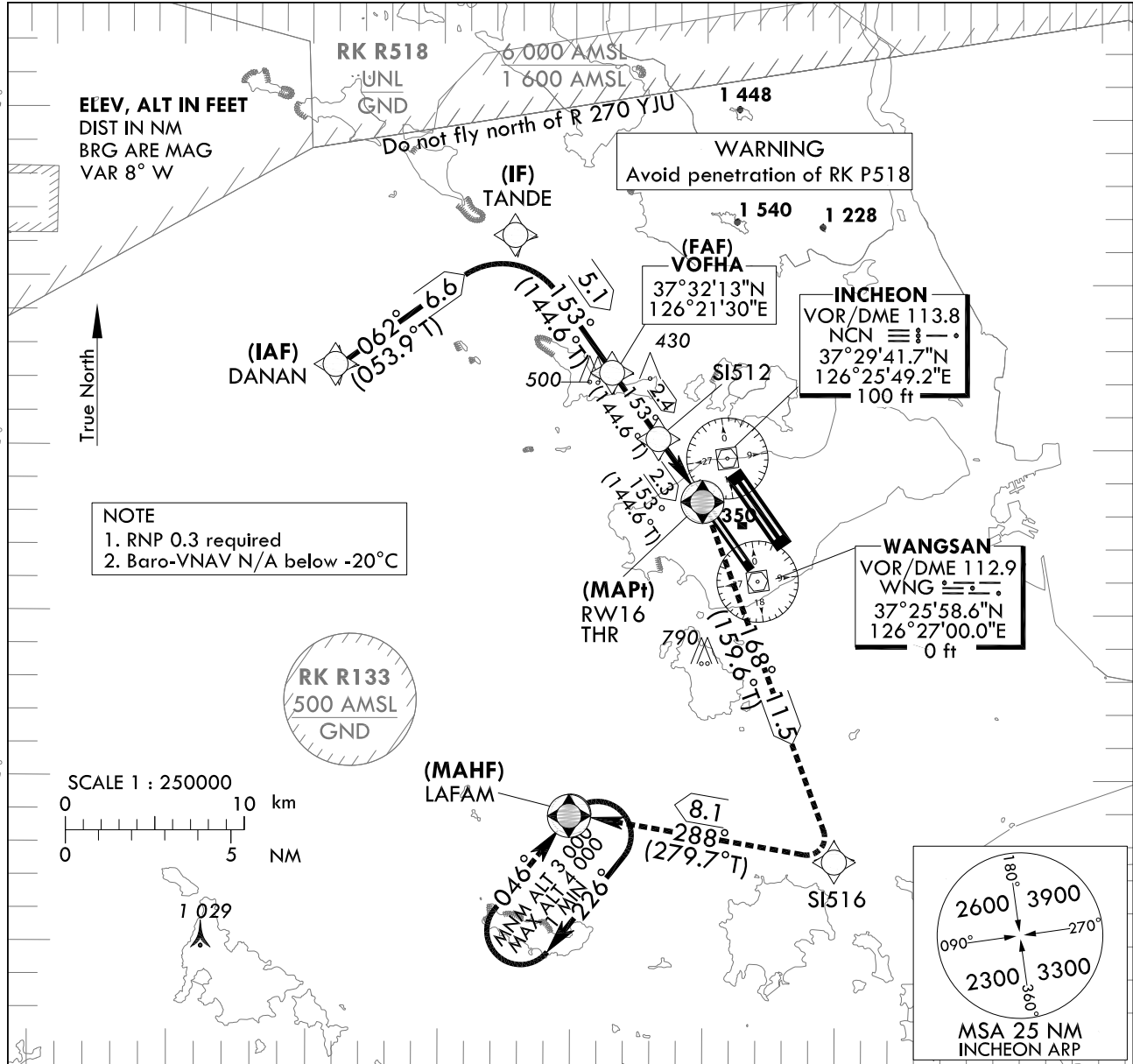
**INSTRUMENT
APPROACH
CHART - ICAO**

AERODROME ELEV 23 ft
HEIGHTS RELATED TO
THR RWY 16 - ELEV 23 ft

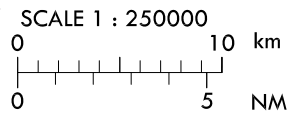
SEOUL APP 119.75
119.1
INCHEON TWR 118.2
118.8

**SEOUL/Incheon Intl(RKSI)
RNAV(GNSS)
RWY 16**

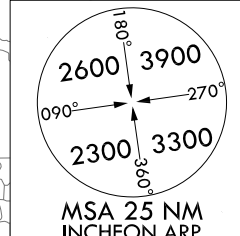
Note : Approach under ICAO Flight Procedures.



NOTE
1. RNP 0.3 required
2. Baro-VNAV N/A below -20°C



RK R133
500 AMSL
GND

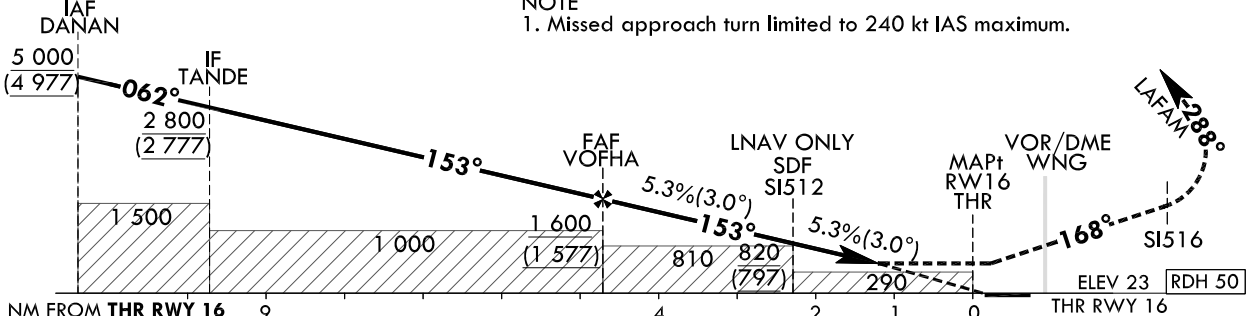


MISSED APPROACH

TRANSITION ALT 14 000
TRANSITION LVL FL 140

Climb to 3 000 ft. Track to SI516 and LAFAM. Hold as published.

NOTE
1. Missed approach turn limited to 240 kt IAS maximum.



CATEGORY		MDA(H)/DA(H)	A	B	C	D	Knots						
LNAV	FULL	520 (497)		1 500 m			Rate of descent	V/V fpm	324	486	648	810	972
	ALS INOP			2 300 m									
LNAV/VNAV	FULL	430 (407)		1 200 m			* Timing Not authorized for defining MAPt. * Circling Not authorized.						
	ALS INOP			1 900 m									

Change : Amended coordinate and radial format.

SEOUL/Incheon Intl(RKSI)
RNAV(GNSS)
RWY 16

AERONAUTICAL DATA TABULATION

Instrument Approach Procedure Coding Tables

RNAV(GNSS) RWY 16

Serial Number	Path Descriptor	Waypoint Identifier	Fly-over	Course/Track °M(°T)	Distance (NM)	Turn direction	Altitude (ft)	Speed (kt)	Coordinates	VPA/TCH	Navigation specification	Remarks
001	IF	DANAN	-	-	-	-	+5 000	-	37°32'26.0"N 126°11'04.0"E (R 291 NCN/D12, R 305 WNG/D14)	-	RNP APCH	IAF
002	TF	TANDE	-	062 (053.9)	6.6	-	+2 800	-	37°36'21.0"N 126°17'48.8"E (R 324 NCN/D9, R 333 WNG/D13)	-	RNP APCH	IF
003	TF	VOFHA	-	153 (144.6)	5.1	-	+1 600	-	37°32'12.9"N 126°21'30.4"E (R 314 NCN/D4, R 333 WNG/D8)	-	RNP APCH	FAF
004	TF	SI512	-	153 (144.6)	2.4	-	+820	-	37°30'14.8"N 126°23'15.7"E (R 293 NCN/D2, R 333 WNG/D5)	-	RNP APCH	SDF
005	TF	RW16	Y	153 (144.6)	2.3	-	+520	-	37°28'22.1"N 126°24'56.0"E (R 216 NCN/D2, R 333 WNG/D3)	-3.01/50	RNP APCH	MAPt
006	TF	SI516	-	168 (159.6)	11.5	-	-	-240	37°17'34.0"N 126°29'57.5"E (R 173 NCN/D13, R 172 WNG/D9)	-	RNP APCH	-
007	TF	LAFAM	Y	288 (279.7)	8.1	-	+3 000	-240	37°18'55.0"N 126°19'59.0"E (R 211 NCN/D12, R 226 WNG/D9)	-	RNP APCH	-
008	HM	LAFAM	Y	046 (038.4)	-	R	-4 000 +3 000	-	37°18'55.0"N 126°19'59.0"E (R 211 NCN/D12, R 226 WNG/D9)	-	RNP APCH	1 min (Outbound timing)

Change : Amended coordinate format.

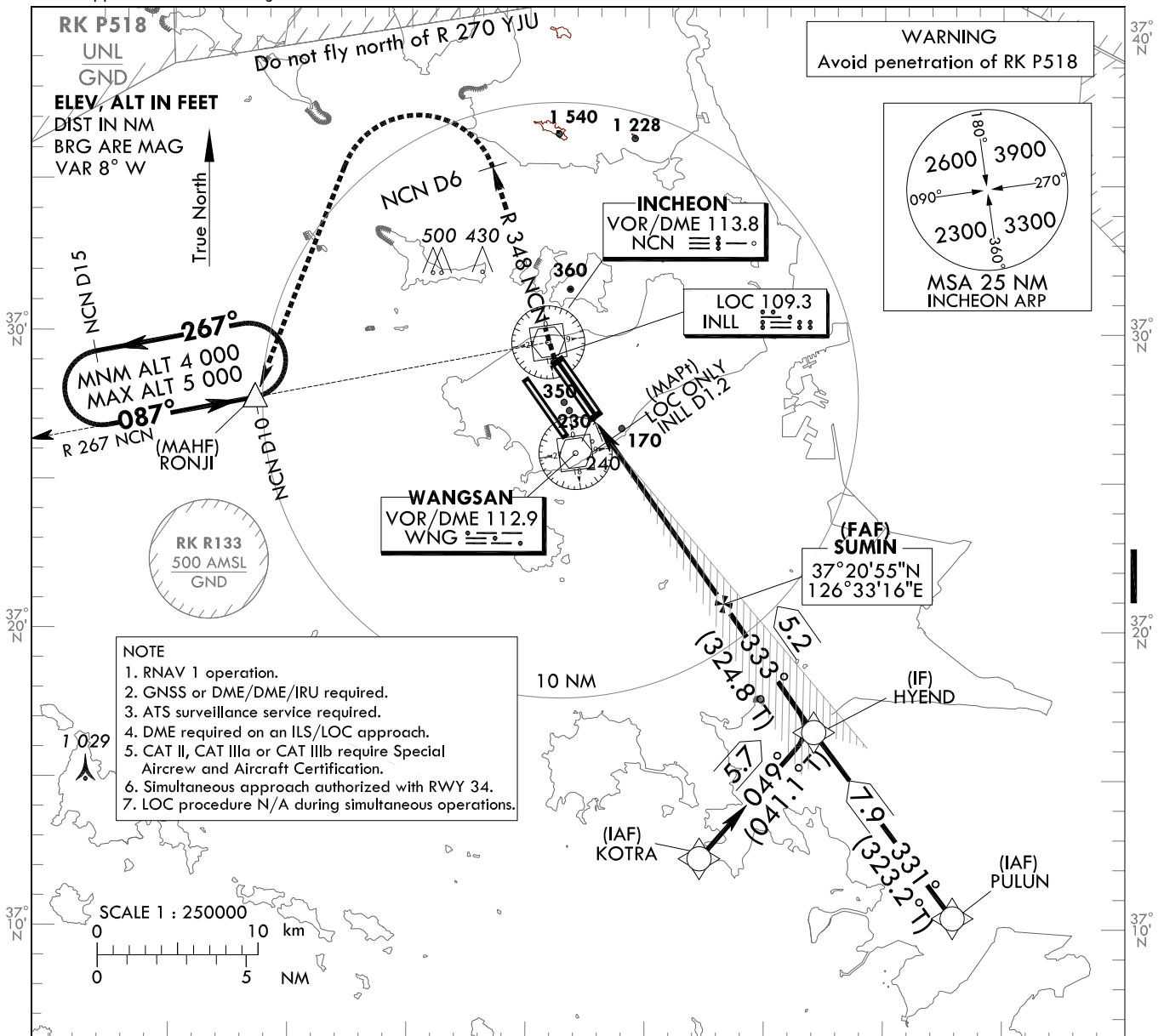
**INSTRUMENT
APPROACH
CHART - ICAO**

AERODROME ELEV 23 ft
HEIGHTS RELATED TO
THR RWY 33L - ELEV 23 ft

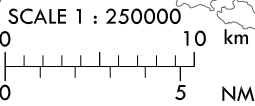
SEOUL APP 119.75
119.1
INCHEON TWR 118.2
118.8

**SEOUL/Incheon Intl(RKSI)
ILS or LOC RWY 33L
CAT II & III**

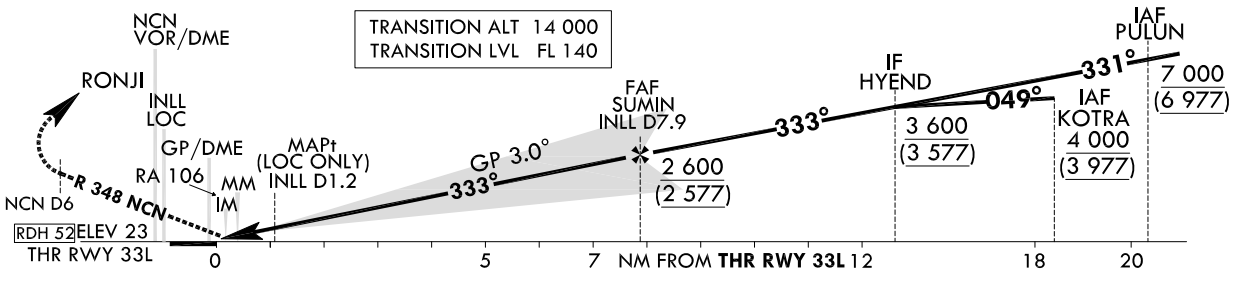
Note : Approach under ICAO Flight Procedures.



- NOTE**
1. RNAV 1 operation.
 2. GNSS or DME/DME/IRU required.
 3. ATS surveillance service required.
 4. DME required on an ILS/LOC approach.
 5. CAT II, CAT IIIa or CAT IIIb require Special Aircrew and Aircraft Certification.
 6. Simultaneous approach authorized with RWY 34.
 7. LOC procedure N/A during simultaneous operations.



RECOMMENDED PROFILE		DME INLL	7	6	5	4	3	2
Final Approach Gradient 5.35%, 325 ft/NM		ALT(HGT)	2 299 (2 276)	1 974 (1 951)	1 649 (1 626)	1 323 (1 300)	998 (975)	673 (650)



CATEGORY	DA(DH)/MDA(MDH)	A					B					C					D					DL										
		CAT-I (CG 2.5%)		CAT-I (CG 4.0%)		LOC	CAT II		CAT IIIa		CAT IIIb		CAT-I (CG 2.5%)		CAT-I (CG 4.0%)		LOC	CAT II		CAT IIIa		CAT IIIb		CAT-I (CG 2.5%)		CAT-I (CG 4.0%)		LOC	CAT II		CAT IIIa	
Straight-in	455 (432)	FULL		ALS INOP		430 (407)	300 m		175 m		75 m ² /125 m		300 m		1 300 m		2 000 m		RVR 550 m, VIS 800 m		1 200 m		1 200 m		1 900 m		300 m ¹ /350 m		300 m ¹ /350 m			
		FULL		ALS INOP		430 (407)	300 m		175 m		75 m ² /125 m		300 m		1 300 m		2 000 m		RVR 550 m, VIS 800 m		1 200 m		1 200 m		1 900 m		300 m ¹ /350 m		300 m ¹ /350 m			
	FULL		ALS INOP		430 (407)	300 m		175 m		75 m ² /125 m		300 m		1 300 m		2 000 m		RVR 550 m, VIS 800 m		1 200 m		1 200 m		1 900 m		300 m ¹ /350 m		300 m ¹ /350 m				
	FULL		ALS INOP		430 (407)	300 m		175 m		75 m ² /125 m		300 m		1 300 m		2 000 m		RVR 550 m, VIS 800 m		1 200 m		1 200 m		1 900 m		300 m ¹ /350 m		300 m ¹ /350 m				
	FULL		ALS INOP		430 (407)	300 m		175 m		75 m ² /125 m		300 m		1 300 m		2 000 m		RVR 550 m, VIS 800 m		1 200 m		1 200 m		1 900 m		300 m ¹ /350 m		300 m ¹ /350 m				
	FULL		ALS INOP		430 (407)	300 m		175 m		75 m ² /125 m		300 m		1 300 m		2 000 m		RVR 550 m, VIS 800 m		1 200 m		1 200 m		1 900 m		300 m ¹ /350 m		300 m ¹ /350 m				

MISSED APPROACH
Climb to 500 ft on RWY heading then turn RIGHT to intercept and follow R 348 NCN to 6 DME, continue climb to 4 000 ft LEFT turn direct to RONJI. Hold as published.

NOTE

1. Missed approach turn limited to 210 kt IAS maximum.
2. Missed approach minimum climb gradient of 2.5% to 4 000 ft(DH 432), 4% to 2 000 ft(DH 200 or 100).

* Timing Not authorized for defining MAPt.
* Circling Not authorized.

1) For CAT D/DL aeroplane conducting an autoland.
2) Aeroplane use Fail-operational system.

Change : Amended coordinate format.

SEOUL/Incheon Intl(RKSI)
ILS or LOC RWY 33L
CAT II & III

AERONAUTICAL DATA TABULATION

ILS/LOC Approach to RWY 33L from PULUN to HYEND(IF)	
Fix / Point	Coordinates
PULUN(IAF)	37°10'22.2"N 126°42'55.7"E
HYEND(IF)	37°16'41.2"N 126°37'01.0"E

ILS/LOC Approach to RWY 33L from KOTRA to HYEND(IF)	
Fix / Point	Coordinates
KOTRA(IAF)	37°12'21.3"N 126°32'17.4"E
HYEND(IF)	37°16'41.2"N 126°37'01.0"E

ILS/LOC Approach to RWY 33L from HYEND(IF) to MAHF	
Fix / Point	Coordinates
SUMIN(FAF) BRG 332.69°/7.92 NM INLL	37°20'55.1"N 126°33'16.4"E
D1.2 INLL(MAPt) (LOC ONLY) BRG 332.69°/1.20 NM INLL	37°26'24.4"N 126°28'24.3"E
THR RWY 33L	37°27'15.21"N 126°27'39.08"E
INLL DME	37°27'25.4"N 126°27'36.0"E
NCN VOR/DME	37°29'47.1"N 126°25'49.2"E
Climb to 500 ft HDG 333	-
D6 NCN	-
RONJI BRG 211.55°/10.00 NM NCN	37°27'47.0"N 126°13'29.0"E

Change : Amended coordinate format.

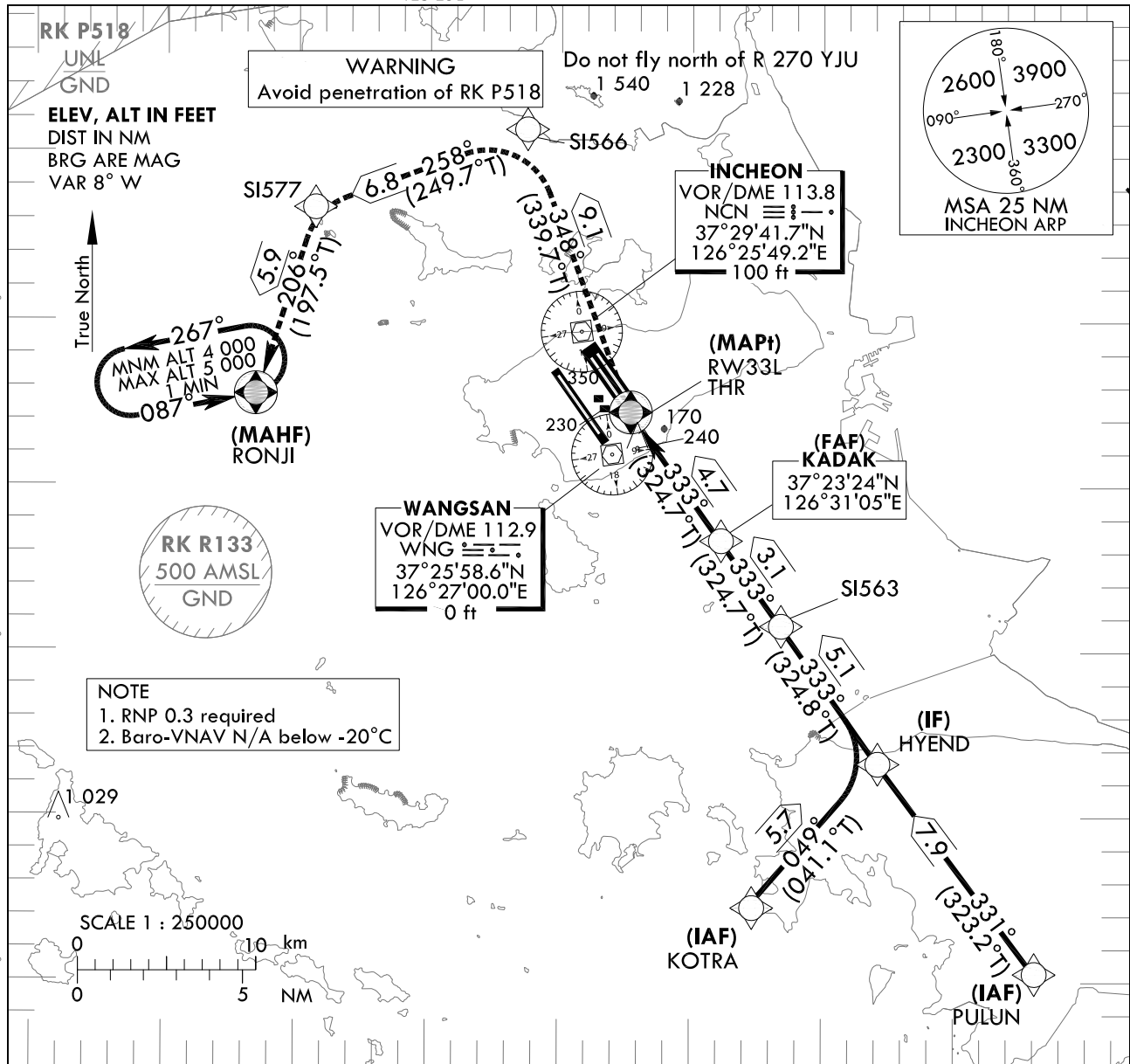
**INSTRUMENT
APPROACH
CHART - ICAO**

AERODROME ELEV 23 ft
HEIGHTS RELATED TO
THR RWY 33L - ELEV 23 ft

SEOUL APP 119.75
119.1
INCHEON TWR 118.2
118.8

**SEOUL/Incheon Intl(RKSI)
RNAV(GNSS)
RWY 33L**

Note : Approach under ICAO Flight Procedures. 126°20'E



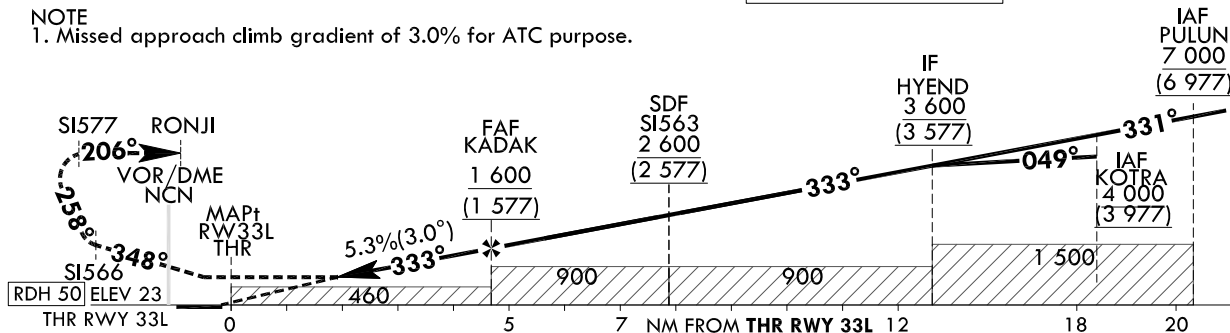
MISSED APPROACH

Climb to 4 000 ft. Track to SI566, SI577 and RONJI. Hold as published.

TRANSITION ALT 14 000
TRANSITION LVL FL 140

NOTE

1. Missed approach climb gradient of 3.0% for ATC purpose.



CATEGORY		MDA(H)/DA(H)	A	B	C	D	Knots						
LNAV	FULL	510 (487)		1 500 m			Rate of descent	V/V fpm	323	485	647	809	970
	ALS INOP			2 300 m									
LNAV/VNAV	FULL	430 (407)		1 200 m			* Timing Not authorized for defining MAPt. * Circling Not authorized.						
	ALS INOP			1 900 m									

Change : Amended coordinate and radial format.

SEOUL/Incheon Intl(RKSI)
RNAV(GNSS)
RWY 33L

AERONAUTICAL DATA TABULATION

Instrument Approach Procedure Coding Tables

RNAV(GNSS) RWY 33L - via PULLUN to HYEND(IF)

Serial Number	Path Descriptor	Waypoint Identifier	Fly-Over Course/Track over M(°T)	Distance (NM)	Turn direction	Altitude (ft)	Speed (kt)	Coordinates	VPA/TCH	Navigation specification	Remarks
001	IF	PULLUN	-	-	-	+7 000	-	37°10'22.2"N 126°42'55.7"E (R 153 NCN/D24, R 149 WNG/D20)	-	RNP APCH	IAF
002	TF	HYEND	-	331 (323.2)	-	+3 600	-	37°16'41.2"N 126°37'01.0"E (R 153 NCN/D16, R 147 WNG/D12)	-	RNP APCH	IF

RNAV(GNSS) RWY 33L - via KOTRA to HYEND(IF)

Serial Number	Path Descriptor	Waypoint Identifier	Fly-Over Course/Track over M(°T)	Distance (NM)	Turn direction	Altitude (ft)	Speed (kt)	Coordinates	VPA/TCH	Navigation specification	Remarks
001	IF	KOTRA	-	-	-	+4 000	-	37°12'21.3"N 126°32'17.4"E (R 171 NCN/D18, R 171 WNG/D14)	-	RNP APCH	IAF
002	TF	HYEND	-	049 (041.1)	-	+3 600	-	37°16'41.2"N 126°37'01.0"E (R 153 NCN/D16, R 147 WNG/D12)	-	RNP APCH	IF

RNAV(GNSS) RWY 33L - via HYEND(IF) to MAHF

Serial Number	Path Descriptor	Waypoint Identifier	Fly-Over Course/Track over M(°T)	Distance (NM)	Turn direction	Altitude (ft)	Speed (kt)	Coordinates	VPA/TCH	Navigation specification	Remarks
002	TF	HYEND	-	-	-	+3 600	-	37°16'41.2"N 126°37'01.0"E (R 153 NCN/D16, R 147 WNG/D12)	-	RNP APCH	IF
003	TF	S1563	-	333 (324.8)	-	+2 600	-	37°20'49.5"N 126°33'21.4"E (R 154 NCN/D11, R 143 WNG/D7)	-	RNP APCH	SDF
004	TF	KADAK	-	333 (324.7)	-	+1 600	-	37°23'23.8"N 126°31'04.6"E (R 154 NCN/D8, R 136 WNG/D4)	-	RNP APCH	FAF
005	TF	RW33L	Y	333 (324.7)	-	+510	-	37°27'15.2"N 126°27'39.08"E (R 157 NCN/D3, R 030 WNG/D1)	-3.01/50	RNP APCH	MApT
006	TF	S1566	-	348 (339.7)	-	-	-	37°35'45.5"N 126°23'42.2"E (R 352 NCN/D6, R 353 WNG/D10)	-	RNP APCH	-
007	TF	S1577	-	258 (249.7)	-	-	-	37°33'23.8"N 126°15'42.3"E (R 303 NCN/D9, R 317 WNG/D12)	-	RNP APCH	-
008	TF	RONJI	Y	206 (197.5)	-	+4 000	-	37°27'47.0"N 126°13'29.0"E (R 267 NCN/D10, R 288 WNG/D11)	-	RNP APCH	-
009	HM	RONJI	Y	087 (078.9)	-	-5 000 +4 000	-	37°27'47.0"N 126°13'29.0"E (R 267 NCN/D10, R 288 WNG/D11)	-	RNP APCH	1 min (Outbound timing)

Change : Amended coordinate format.

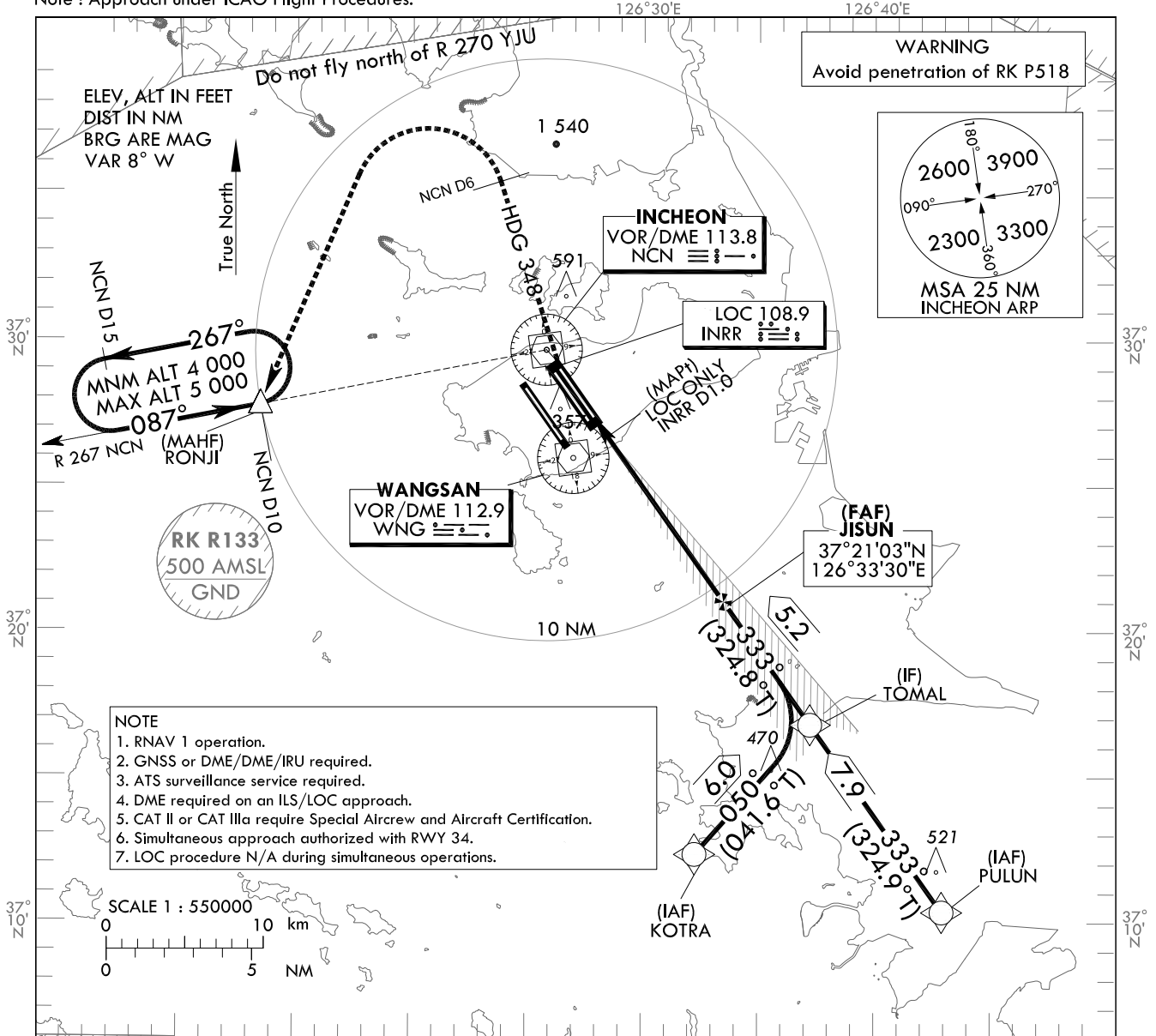
**INSTRUMENT
APPROACH
CHART - ICAO**

AERODROME ELEV 23 ft
HEIGHTS RELATED TO
THR RWY 33R - ELEV 23 ft

SEOUL APP 119.75
119.1
INCHEON TWR 118.2
118.8

SEOUL/Incheon Intl(RKSI)
ILS or LOC RWY 33R
CAT II & III

Note : Approach under ICAO Flight Procedures.



NOTE
1. RNAV 1 operation.
2. GNSS or DME/DME/IRU required.
3. ATS surveillance service required.
4. DME required on an ILS/LOC approach.
5. CAT II or CAT IIIa require Special Aircrew and Aircraft Certification.
6. Simultaneous approach authorized with RWY 34.
7. LOC procedure N/A during simultaneous operations.

RECOMMENDED PROFILE		DME INRR						TRANSITION ALT 14 000		TRANSITION LVL FL 140	
Final Approach Gradient 5.33%, 325 ft ft/NM		ALT(HGT)	7	6	5	4	3	2			
			2 299	1 974	1 649	1 323	998	673			
			2 276	1 951	1 626	1 300	(975)	(650)			
CATEGORY		DA(DH)/MDA(MDH)	A	B	C	D	DL	MISSED APPROACH			
Straight -in	CAT-I (CG 2.5%)	FULL (438)	1 300 m		2 000 m		RVR 550 m, VIS 800 m		Climb to 500 ft on RWY heading then turn RIGHT on HDG 348° to NCN 6 DME, continue climb to 4 000 ft LEFT turn direct to RONJI. Hold as published.		
	CAT-I (CG 4.0%)	FULL (200)	1 200 m		1 200 m		1 900 m		NOTE		
	LOC	FULL (407)	1 200 m		1 200 m		1 900 m		1. Missed approach turn limited to 210 kt IAS maximum.		
	CAT II	123(100)	300 m		300 m ¹⁾ / 350 m				2. Missed approach minimum climb gradient of 2.5% to 4 000 ft (DH 438), 4% to 2 000ft (DH 200 or 100).		
	CAT IIIa	-	175 m						1) For CAT D/DL aeroplane conducting an autoland.		
	CAT IIIb	-	75 m ²⁾ / 125 m						2) Aeroplane use fail-operational system.		
								* Timing Not authorized for defining MAPt.			
								* Circling Not authorized.			

SEOUL/Incheon Intl(RKSI)
ILS or LOC RWY 33R
CAT II & III

AERONAUTICAL DATA TABULATION

ILS/LOC Approach to RWY 33R from PULUN to TOMAL(IF)	
Fix / Point	Coordinates
PULUN(IAF)	37°10'22.2"N 126°42'55.7"E
TOMAL(IF)	37°16'49.0"N 126°37'14.8"E

ILS/LOC Approach to RWY 33R from KOTRA to TOMAL(IF)	
Fix / Point	Coordinates
KOTRA(IAF)	37°12'21.3"N 126°32'17.4"E
TOMAL(IF)	37°16'49.0"N 126°37'14.8"E

ILS/LOC Approach to RWY 33R from TOMAL(IF) to MAHF	
Fix / Point	Coordinates
JISUN(FAF) BRG 332.69°/7.92NM INRR	37°21'02.8"N 126°33'30.1"E
D1.0 INRR(MAPt LOC ONLY) BRG 332.69°/0.98NM INRR	37°26'43.0"N 126°28'28.4"E
THR RWY 33R	37°27'22.97"N 126°27'52.82"E
INRR DME	37°27'33.2"N 126°27'49.7"E
NCN VOR/DME	37°29'41.7"N 126°25'49.2"E
Climb to 500 ft HDG 333	-
D6 NCN HDG 348	-
RONJI BRG 267.27°/10NM NCN	37°27'47.0"N 126°13'29.0"E

Change : Amended coordinate format.

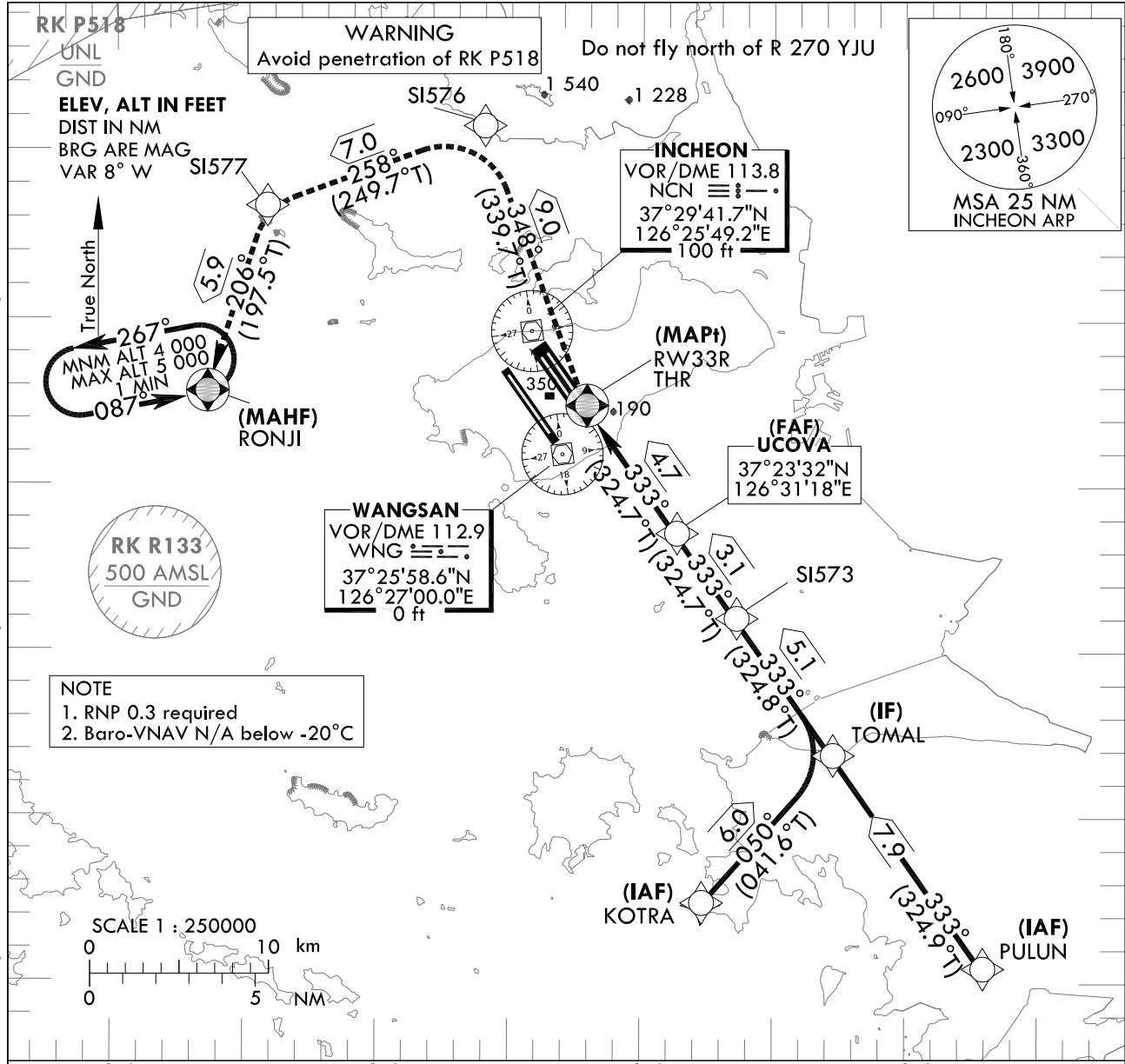
**INSTRUMENT
APPROACH
CHART - ICAO**

AERODROME ELEV 23 ft
HEIGHTS RELATED TO
THR RWY 33R - ELEV 23 ft

SEOUL APP 119.75
119.1
INCHEON TWR 118.2
118.8

**SEOUL/Incheon Intl(RKSI)
RNAV(GNSS)
RWY 33R**

Note : Approach under ICAO Flight Procedures.



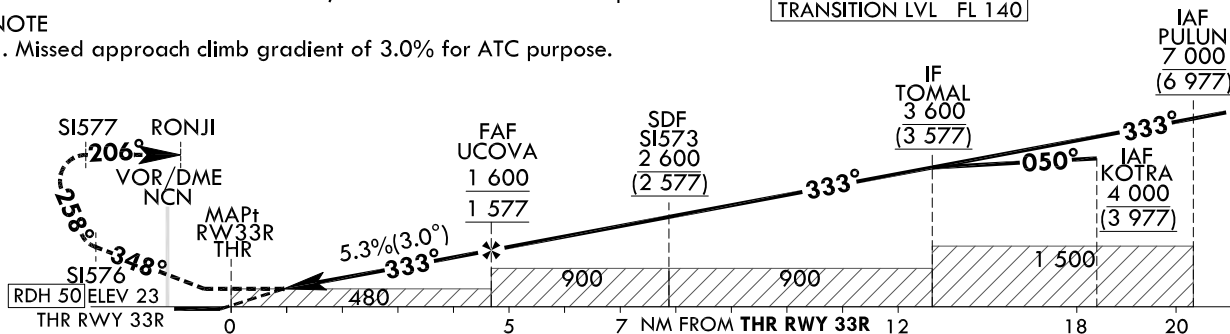
MISSED APPROACH

Climb to 4 000 ft. Track to SI576, SI577 and RONJI. Hold as published.

NOTE

1. Missed approach climb gradient of 3.0% for ATC purpose.

TRANSITION ALT 14 000
TRANSITION LVL FL 140



CATEGORY		MDA(H)/DA(H)	A	B	C	D	Knots					
LNAV	FULL	480 (457)		1 400 m			Rate of descent V/V fpm	60	90	120	150	180
	ALS INOP			2 100 m				323	485	647	809	970
LNAV/VNAV	FULL	430 (407)		1 200 m			* Timing Not authorized for defining MAPt. * Circling Not authorized.					
	ALS INOP			1 900 m								

Change : Amended coordinate and radial format.

SEOUL/Incheon Intl(RKSI)
RNAV(GNSS)
RWY 33R

AERONAUTICAL DATA TABULATION

Instrument Approach Procedure Coding Tables

RNAV(GNSS) RWY 33R - via PULLUN to TOMAL(IF)

Serial Number	Path Descriptor	Waypoint Identifier	Fly-over	Course/Track	Distance (NM)	Turn direction	Altitude (ft)	Speed (kt)	Coordinates	VPA/TCH	Navigation specification	Remarks
001	IF	PULLUN	-	-	-	-	+7 000	-	37°10'22.2"N 126°42'55.7"E (R 153 NCN/D24, R 149 WNG/D20)	-	RNP APCH	IAF
002	TF	TOMAL	-	333 (324.9)	7.9	-	+3 600	-	37°16'49.0"N 126°37'14.8"E (R 153 NCN/D16, R 146 WNG/D12)	-	RNP APCH	IF

RNAV(GNSS) RWY 33R - via KOTRA to TOMAL(IF)

Serial Number	Path Descriptor	Waypoint Identifier	Fly-over	Course/Track	Distance (NM)	Turn direction	Altitude (ft)	Speed (kt)	Coordinates	VPA/TCH	Navigation specification	Remarks
001	IF	KOTRA	-	-	-	-	+4 000	-	37°12'21.3"N 126°32'17.4"E (R 171 NCN/D18, R 171 WNG/D14)	-	RNP APCH	IAF
002	TF	TOMAL	-	050 (041.6)	6.0	-	+3 600	-	37°16'49.0"N 126°37'14.8"E (R 153 NCN/D16, R 146 WNG/D12)	-	RNP APCH	IF

RNAV(GNSS) RWY 33R - via TOMAL(IF) to MAHF

Serial Number	Path Descriptor	Waypoint Identifier	Fly-over	Course/Track	Distance (NM)	Turn direction	Altitude (ft)	Speed (kt)	Coordinates	VPA/TCH	Navigation specification	Remarks
002	TF	TOMAL	-	-	-	-	+3 600	-	37°16'49.0"N 126°37'14.8"E (R 153 NCN/D16, R 146 WNG/D12)	-	RNP APCH	IF
003	TF	S1573	-	333 (324.8)	5.1	-	+2 600	-	37°20'57.2"N 126°33'35.1"E (R 153 NCN/D11, R 142 WNG/D7)	-	RNP APCH	SDF
004	TF	UCOVA	-	333 (324.7)	3.1	-	+1 600	-	37°23'31.5"N 126°31'18.4"E (R 153 NCN/D8, R 133 WNG/D4)	-	RNP APCH	FAF
005	TF	RW33R	Y	333 (324.7)	4.7	-	+480	-	37°27'22.97"N 126°27'52.82"E (R 153 NCN/D3, R 034 WNG/D2)	-3.01/50	RNP APCH	MApT
006	TF	S1576	-	348 (339.7)	9.0	-	-	-	37°35'50.0"N 126°23'57.5"E (R 354 NCN/D6, R 354 WNG/D10)	-	RNP APCH	-
007	TF	S1577	-	258 (249.7)	7.0	-	-	-	37°33'23.8"N 126°15'42.3"E (R 303 NCN/D9, R 317 WNG/D12)	-	RNP APCH	-
008	TF	RONJI	Y	206 (197.5)	5.9	-	+4 000	-	37°27'47.0"N 126°13'29.0"E (R 267 NCN/D10, R 288 WNG/D11)	-	RNP APCH	-
009	HM	RONJI	Y	087 (078.9)	-	L	-5 000 +4 000	-	37°27'47.0"N 126°13'29.0"E (R 267 NCN/D10, R 288 WNG/D11)	-	RNP APCH	1 min (Outbound timing)

Change : Amended coordinate format.

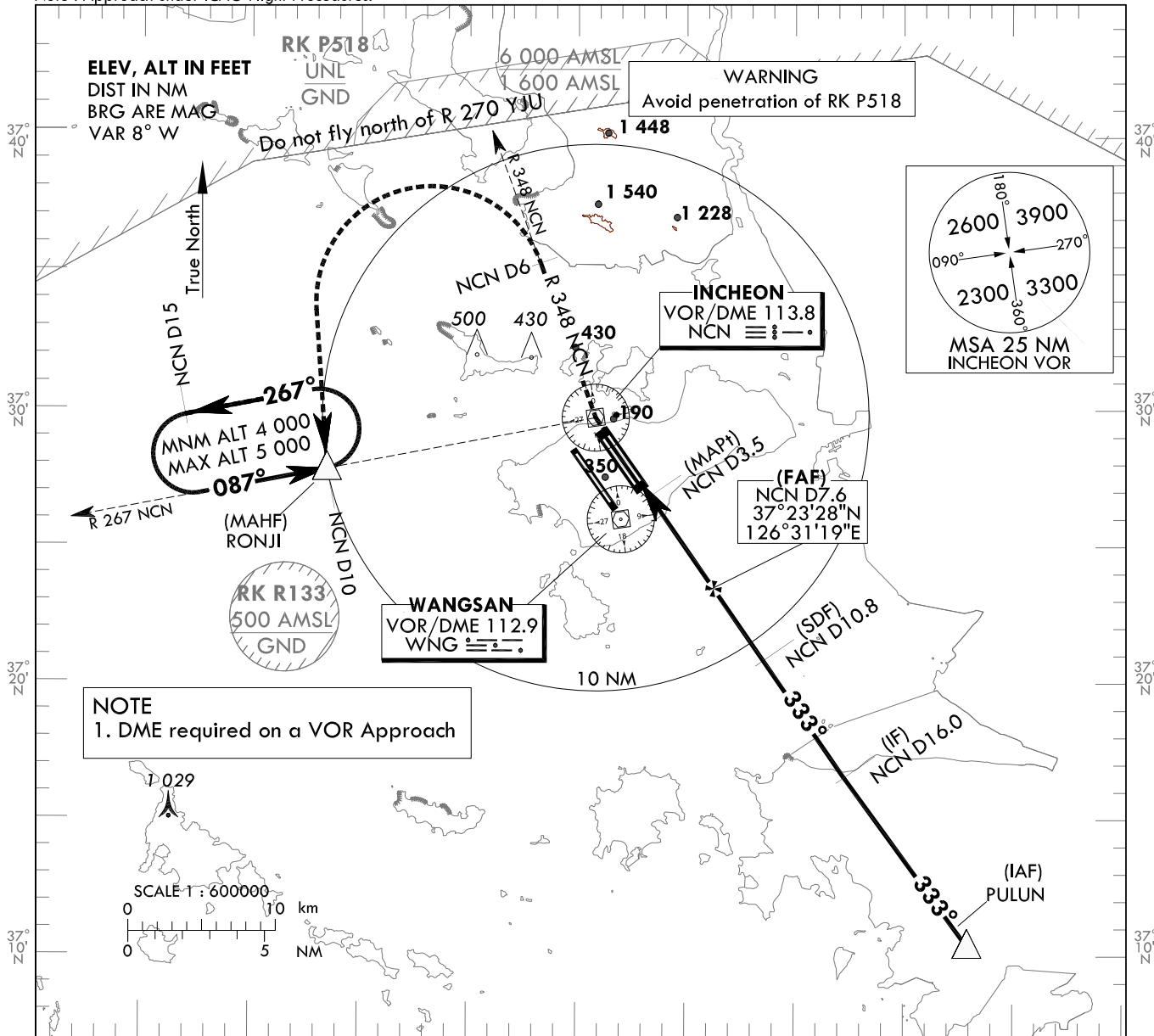
**INSTRUMENT
APPROACH
CHART - ICAO**

AERODROME ELEV 23 ft
HEIGHTS RELATED TO
THR RWY 33R - ELEV 23 ft

SEOUL APP 119.75
119.1
INCHEON TWR 118.2
118.8

**SEOUL/Incheon Intl(RKSI)
VOR
RWY 33R**

Note : Approach under ICAO Flight Procedures.



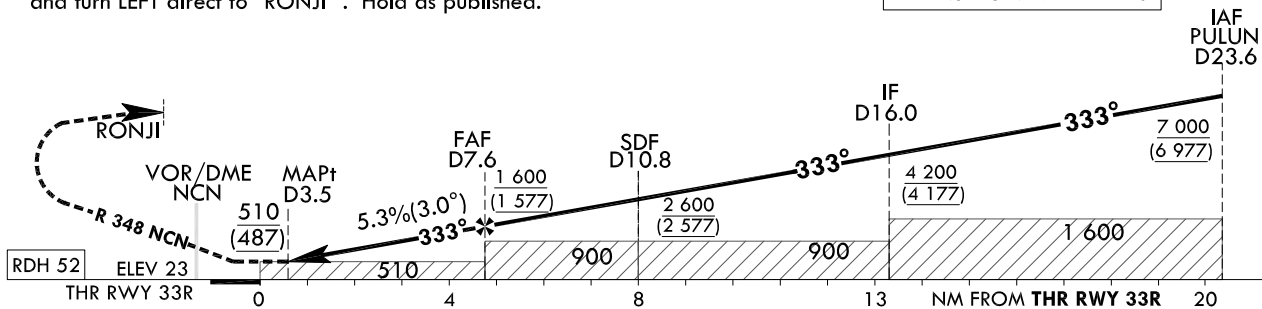
NOTE
1. DME required on a VOR Approach

RECOMMENDED PROFILE	DME KIP	7	6	5	4
Final Approach Gradient 5.3%(319.9 ft/NM)	ALT(HGT)	1 408(1 385)	1 088(1 065)	768(746)	449(426)

MISSED APPROACH

Climb to 4 000 ft via "NCN" VOR then RIGHT turn on R 348 NCN to 6 DME and turn LEFT direct to "RONJI". Hold as published.

TRANSITION ALT 14 000
TRANSITION LVL FL 140



CATEGORY	MDA(MDH)	A	B	C	D	Knots							
						60	90	120	150	180			
Straight-in	FULL	510 (487)	1 600 m				Rate of descent	V/V fpm	320	480	640	800	960
	ALS INOP		2 300 m				* Timing Not authorized for defining MAPt. * Circling Not authorized.						

SEOUL/Incheon Intl(RKSI)
VOR
RWY 33R

AERONAUTICAL DATA TABULATION

VOR Approach to RWY 33R from PULUN		
Fix / Point		Coordinates
PULUN(IAF)		37°10'22.2"N 126°42'55.7"E
D16 NCN(IF)	BRG 332.56°/7.64NM	37°16'35.5"N 126°37'22.8"E
D10.8 NCN(SDF)	BRG 333.00°/10.80NM NCN	37°20'51.0"N 126°33'37.9"E
D7.6 NCN(FAF)	BRG 333.00°/7.60NM NCN	37°23'28.2"N 126°31'19.3"E
D3.5 NCN(MAPt)	BRG 333.00°/3.50NM NCN	37°26'49.6"N 126°28'21.5"E
THR RWY33R	Final approach descent angle 3°	37°27'22.97"N 126°27'52.82"E
NCN VOR/DME		37°29'41.7"N 126°25'49.2"E
D6 NCN	R 348 NCN/6.00NM NCN	37°35'19.7"N 126°23'12.9"E
RONJI	BRG 183.87°/10.00NM NCN	37°27'47.0"N 126°13'29.0"E

Change : Amended coordinate format.

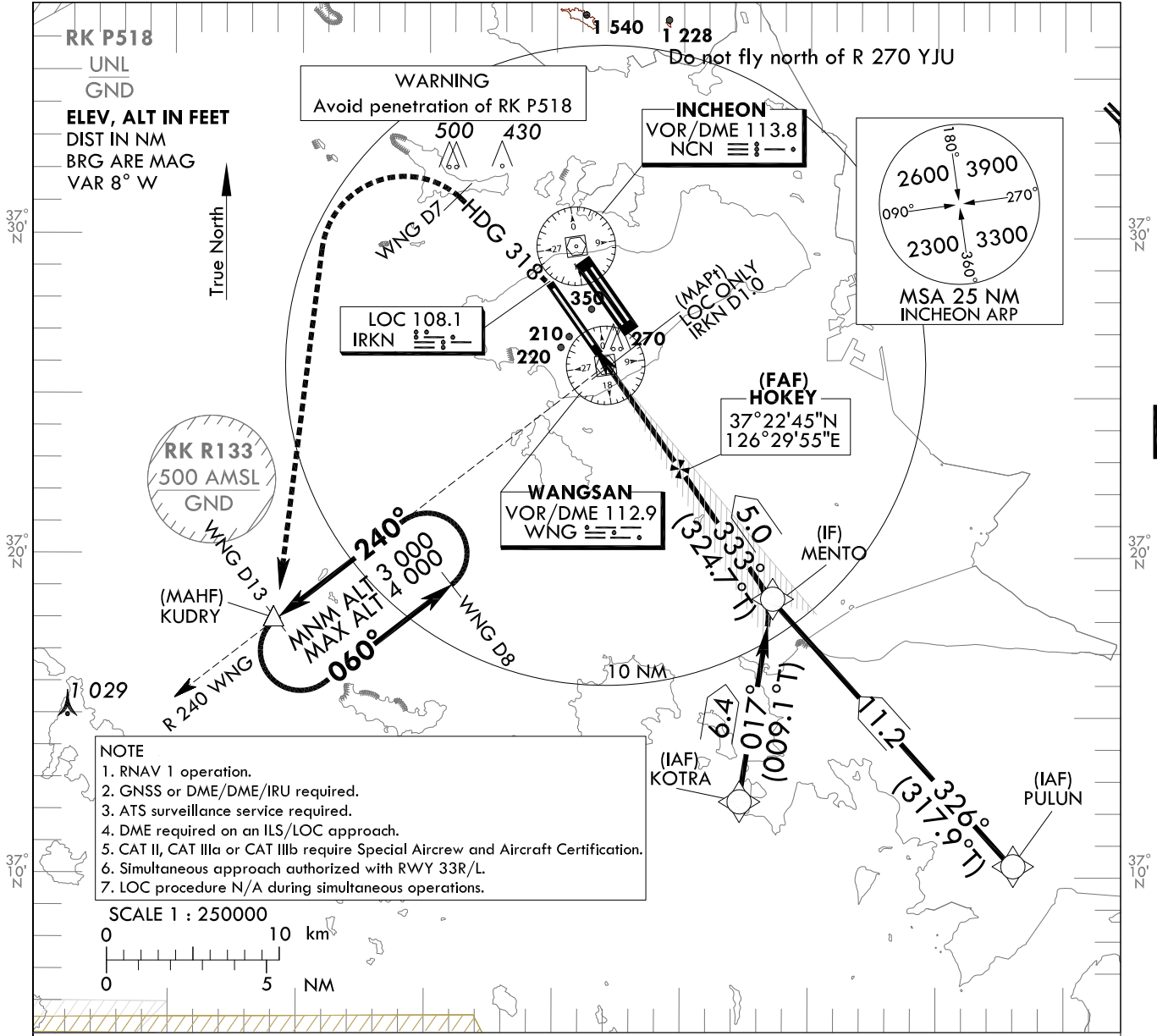
**INSTRUMENT
APPROACH
CHART - ICAO**

AERODROME ELEV 23 ft
HEIGHTS RELATED TO
THR RWY 34 - ELEV 23 ft

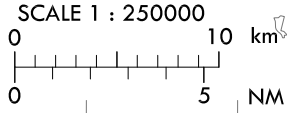
SEOUL APP 119.75
119.1
INCHEON TWR 118.2
118.8

**SEOUL/Incheon Intl(RKSI)
ILS or LOC RWY 34
CAT II & III**

Note : Approach under ICAO Flight Procedures.

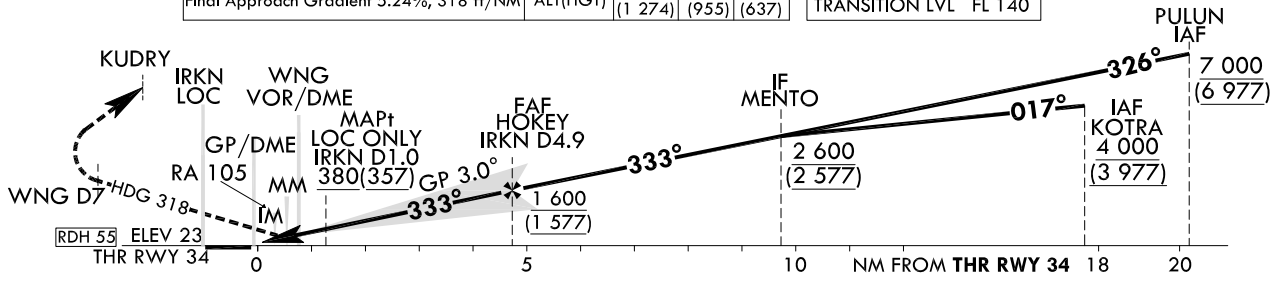


- NOTE**
1. RNAV 1 operation.
 2. GNSS or DME/DME/IRU required.
 3. ATS surveillance service required.
 4. DME required on an ILS/LOC approach.
 5. CAT II, CAT IIIa or CAT IIIb require Special Aircrew and Aircraft Certification.
 6. Simultaneous approach authorized with RWY 33R/L.
 7. LOC procedure N/A during simultaneous operations.



RECOMMENDED PROFILE		DME IRKN	4	3	2
Final Approach Gradient 5.24%, 318 ft/NM		ALT(HGT)	1 297 (1 274)	978 (955)	660 (637)

TRANSITION ALT 14 000
TRANSITION LVL FL 140



CATEGORY	DA(DH)/MDA(MDH)	A					DL
		A	B	C	D		
Straight-in	CAT-I (CG 2.5%) FULL	251 (228)	RVR 550 m, VIS 800 m				
	CAT-I (CG 2.5%) ALS INOP		1 200 m				
	CAT-I (CG 3.0%) FULL	223 (200)	RVR 550 m, VIS 800 m				
	CAT-I (CG 3.0%) ALS INOP		1 200 m				
	LOC	380 (357)	900 m				
	LOC	GP INOP GP & ALS INOP		1 600 m			
CAT II	123(100)	300 m		300 m ¹ /350 m			
CAT IIIa	-	175 m					
CAT IIIb	-	75 m ² /125 m					

MISSED APPROACH
(Climb to 500 ft on RWY Heading then turn LEFT on HDG 318° to WNG D7, continue climb to 3 000 ft LEFT turn direct to KUDRY. Hold as published.)

NOTE

1. Missed approach turn limited to 210 kt IAS maximum.
2. Missed approach minimum climb gradient of 2.5% to 3 000 ft(DH 228), 3% to 1 000 ft(DH 200 or 100).

* Timing Not authorized for defining MAPt.
* Circling Not authorized.

1) For CAT D/DL aeroplane conducting an autoland.
2) Aeroplane use Fail-operational system.

Change : Amended coordinate format.

SEOUL/Incheon Intl(RKSI)
ILS or LOC RWY 34
CAT II & III

AERONAUTICAL DATA TABULATION

ILS/LOC Approach to RWY 34 from PULUN to MENTO(IF)		
Fix / Point	Coordinates	
PULUN(IAF)	37°10'22.2"N	126°42'55.7"E
MENTO(IF)	BRG 325.81°/11.20NM	37°18'39.4"N 126°33'33.4"E

ILS/LOC Approach to RWY 34 from KOTRA to MENTO(IF)		
Fix / Point	Coordinates	
KOTRA(IAF)	37°12'21.3"N	126°32'17.4"E
MENTO(IF)	BRG 017.00°/6.40NM	37°18'39.4"N 126°33'33.4"E

ILS/LOC Approach to RWY 34 from MENTO(IF) to MAHF		
Fix / Point	Coordinates	
HOKEY(FAF)	BRG 332.58°/4.90NM IRKN	37°22'45.3"N 126°29'55.4"E
D1.0 IRKN(MAPt) (LOC ONLY)	BRG 332.58°/1.00NM IRKN	37°25'55.8"N 126°27'06.2"E
WNG VOR/DME		37°25'58.6"N 126°27'00.0"E
THR RWY34		37°26'36.29"N 126°26'30.21"E
IRKN DME		37°26'42.5"N 126°26'18.8"E
Climb to 500 ft	HDG 333	-
D7 WNG		-
KUDRY	BRG 194.59°/13.00NM WNG	37°17'58.7"N 126°14'09.0"E

Change : Amended coordinate format.

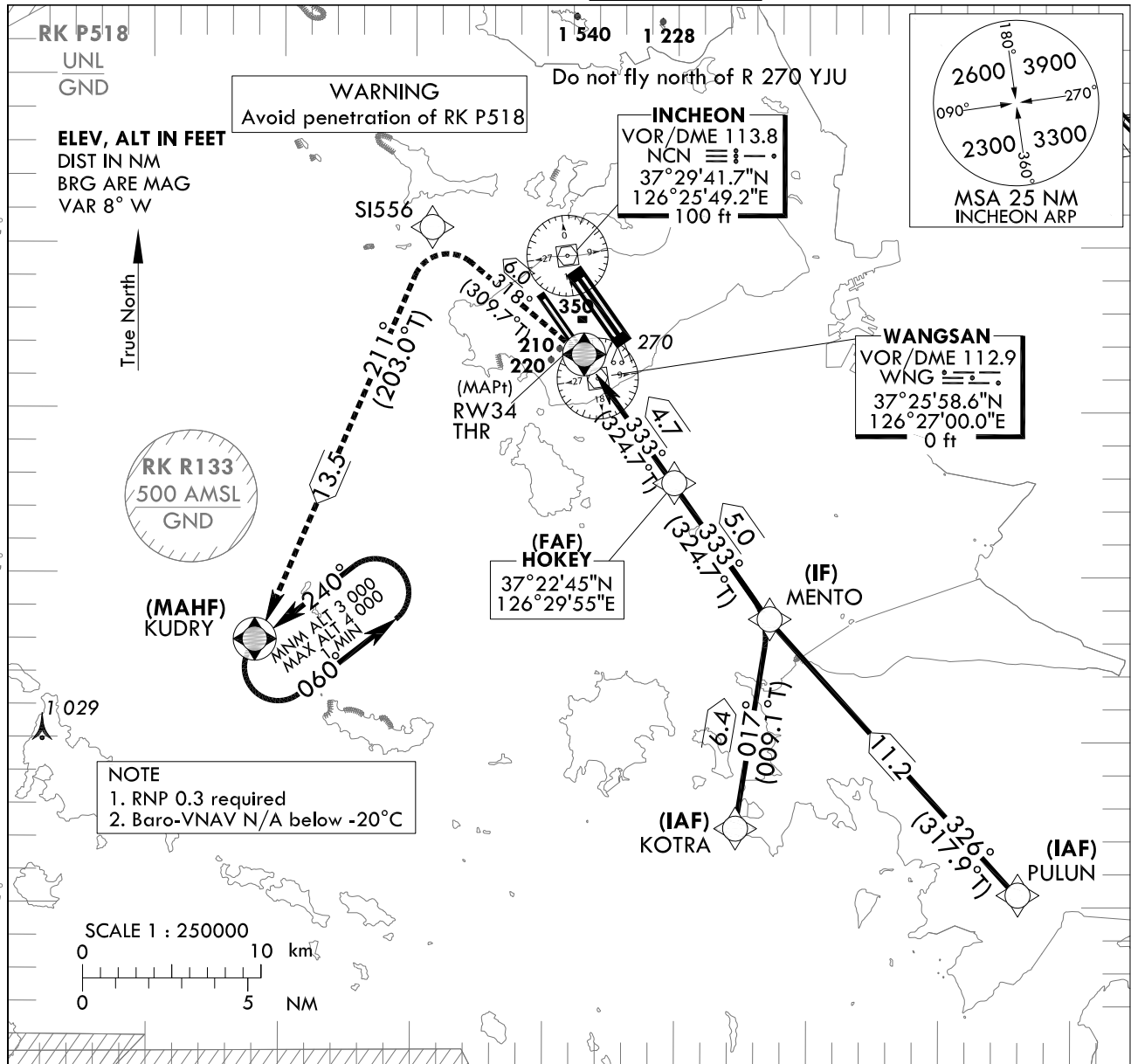
**INSTRUMENT
APPROACH
CHART - ICAO**

AERODROME ELEV 23 ft
HEIGHTS RELATED TO
THR RWY 34 - ELEV 23 ft

SEOUL APP 119.75
119.1
INCHEON TWR 118.8
118.2

SEOUL/Incheon Intl(RKSI)
RNAV(GNSS)
RWY 34

Note : Approach under ICAO Flight Procedures.

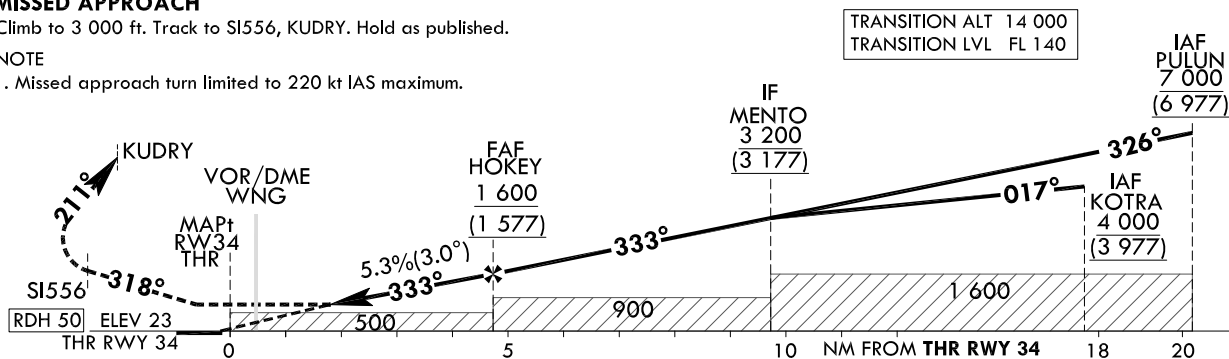


MISSED APPROACH

Climb to 3 000 ft. Track to SI556, KUDRY. Hold as published.

NOTE

1. Missed approach turn limited to 220 kt IAS maximum.



CATEGORY		MDA(H)/DA(H)	A	B	C	D	Knots						
LNAV	FULL	510 (487)	1 500 m				Rate of descent	V/V fpm	324	486	648	810	972
	ALS INOP		2 300 m										
LNAV/VNAV	FULL	430 (407)	1 200 m				* Timing Not authorized for defining MAPt. * Circling Not authorized.						
	ALS INOP		1 900 m										

Change : Amended coordinate and radial format.

SEOUL/Incheon Intl(RKSI)
RNAV(GNSS)
RWY 34

AERONAUTICAL DATA TABULATION

Instrument Approach Procedure Coding Tables

RNAV(GNSS) RWY 34 - via PULLUN to MENTO(IF)

Serial Number	Path Descriptor	Waypoint Identifier	Fly-over	Course/Track °M(°T)	Distance (NM)	Turn direction	Altitude (ft)	Speed (kt)	Coordinates	VPA/TCH	Navigation specification	Remarks
001	IF	PULLUN	-	-	-	-	+7 000	-	37°10'22.2"N 126°42'55.7"E (R 153 NCN/D24, R 149 WNG/D20)	-	RNP APCH	IAF
002	TF	MENTO	-	326 (317.9)	11.2	-	+3 200	-	37°18'39.4"N 126°33'33.4"E (R 159 NCN/D13, R 152 WNG/D9)	-	RNP APCH	IF

RNAV(GNSS) RWY 34 - via KOTRA to MENTO(IF)

Serial Number	Path Descriptor	Waypoint Identifier	Fly-over	Course/Track °M(°T)	Distance (NM)	Turn direction	Altitude (ft)	Speed (kt)	Coordinates	VPA/TCH	Navigation specification	Remarks
001	IF	KOTRA	-	-	-	-	+4 000	-	37°12'21.3"N 126°32'17.4"E (R 171 NCN/D18, R 171 WNG/D14)	-	RNP APCH	IAF
002	TF	MENTO	-	017 (009.1)	6.4	-	+3 200	-	37°18'39.4"N 126°33'33.4"E (R 159 NCN/D13, R 152 WNG/D9)	-	RNP APCH	IF

RNAV(GNSS) RWY 34 - via MENTO(IF) to MAHF

Serial Number	Path Descriptor	Waypoint Identifier	Fly-over	Course/Track °M(°T)	Distance (NM)	Turn direction	Altitude (ft)	Speed (kt)	Coordinates	VPA/TCH	Navigation specification	Remarks
002	TF	MENTO	-	-	-	-	+3 200	-	37°18'39.4"N 126°33'33.4"E (R 159 NCN/D13, R 152 WNG/D9)	-	RNP APCH	IF
003	TF	HOKEY	-	333 (324.7)	5.0	-	+1 600	-	37°22'45.3"N 126°29'55.4"E (R 163 NCN/D8, R 152 WNG/D4)	-	RNP APCH	FAF
004	TF	RW34	Y	333 (324.7)	4.7	-	+510	-	37°26'36.29"N 126°26'30.22"E (R 178 NCN/D3, R 336 WNG/D1)	-3.01/50	RNP APCH	MAPT
005	TF	SI556	-	318 (309.7)	6.0	-	-	-220	37°30'24.6"N 126°20'44.8"E (R 288 NCN/D4, R 320 NCN/D7)	-	RNP APCH	-
006	TF	KUDRY	Y	211 (203.0)	13.5	-	+3 000	-220	37°17'58.7"N 126°14'09.0"E (R 226 NCN/D15, R 240 WNG/D13)	-	RNP APCH	-
007	HM	KUDRY	Y	240 (232.0)	-	L	-4 000 +3 000	-	37°17'58.7"N 126°14'09.0"E (R 226 NCN/D15, R 240 WNG/D13)	-	RNP APCH	1 min (Outbound timing)

Change : Amended coordinate format.